

2023

# Guide to Assistance



## For Agricultural Producers of Vermont

A Comprehensive Guide to Assistance Opportunities  
for Agricultural Producers of Vermont

View the interactive version of this Guide:  
[FranklinCountyNRCD.org/AgProducersGuide](https://FranklinCountyNRCD.org/AgProducersGuide)

# Introduction

This guide is a resource manual for aspiring, beginning, current, and transitioning agricultural producers operating in Vermont.

This guide includes local, state, and federal technical and financial assistance opportunities for individuals and entities working with crops, forestry products, livestock, nursery stock, and/or other land-based products.

Visit the website or contact information associated with each opportunity for the most up-to-date information.

If you are need of assistance in regards to any opportunity, such as help applying to a program or grant, please feel free to contact your local Natural Resources Conservation District; the Contacts list is at the end of this Guide.

This guide was created and continues to be updated by the Franklin County Natural Resources Conservation District. However, this guide is applicable across the entire State of Vermont, not limited to Franklin County.

We wish to thank all the organizations represented in this publication who have reviewed and provided feedback to support its improvement and have contributed up-to-date information. Please let us know if anything could be improved by contacting us at: [info@FranklinCountyNRCD.org](mailto:info@FranklinCountyNRCD.org)

Last updated: December 22th, 2022



FRANKLIN COUNTY  
NATURAL RESOURCES  
CONSERVATION DISTRICT

# Introduction

## **How is this publication structured?**

This guide first provides an overview of current service providers in the agricultural sector. The Table of Contents is organized by scope of service. For example, tillage implement rentals and programs that support purchasing of reduced tillage implements can be found in the "Equipment" section. Each page will provide an overview of the service, compatible practices or projects, contact information, funding details, and deadline information.

## **How often is this publication updated?**

Although we do our best to capture updates to current programs and newly available programs, please recognize that each organization operates on unique calendar cycles. This means that final details of programs may not be available while this publication is under review. We have attempted to capture the available programs traditionally offered on an annual basis. If you are interested in a program but the deadline has passed, please continue to inquire and reach out for support, as you may be able to apply for the next year or funding cycle. We have omitted temporary programs, such as COVID-19 specific programs and support services.

Although this guide is a robust resource, please always refer to the website or personnel associated with each service for the most up-to-date and accurate information.

Expect an update to this Guide in fall of 2023.

# Natural Resources Conservation Districts

Natural Resources Conservation Districts (NRCs) are non-regulatory entities that work with private landowners, farms, state agencies, federal agencies, and other partner organizations to promote and implement conservation programs. In some parts of the United States, Conservation Districts may also be referred to as Water Conservation Districts, Soil and Water Conservation Districts, and Natural Resource Districts.

## What services do Natural Resources Conservation Districts offer?

- Connect people, organizations, and resources to steward our land and water resources for the future. Including training for young conservation leaders, developing comprehensive conservation plans, lake watershed action plans, and implementing projects.
- Assist agricultural producers with Nutrient Management Planning, water quality sampling, soil sampling, manure sampling, harvest and nutrient application record keeping, equipment rentals, and more.
- Host events, provide educational opportunities, and assistance related to agricultural practices, water quality, invasive species, native species, tree planting, storm water, lake shorelines, and dam removal projects. Check out the RAP Quiz.
- Coordinate assistance and funding from all available sources—public, private, local, state and federal—to develop locally-driven solutions to natural resources concerns. This can mean coordination with other organizations, communities, municipalities, homeowners, land owners, land stewards, agricultural and forest producers, as well as businesses.
- Collaborate with other organizations in program implementation including many of the organizations in this guide along with other local non-profits, conservation commissions, and local groups.
- Coordinate tree plantings through outreach, funding, plant and volunteer procurement, installation, and maintenance.
- Many Conservation Districts offer annual tree, plant, and/or fish sales.
- Together, Vermont's 14 Conservation Districts serve the entire state. We are foundational to the state's agricultural and conservation communities.

Check with your local Conservation District to see what programs and opportunities they offer! See page 105 for contact information for your Conservation District

## Non-Profit and Educational Organizations

**Ag Container Recycling Council (ACRC):** A trade association that works to facilitate the collection and recycling of one-way rigid HDPE plastic agricultural crop protection, animal health, specialty pest control, micronutrient, biologicals, fertilizer, and/or adjuvant product containers.

**Efficiency Vermont:** Efficiency Vermont helps Vermonters invest in themselves through energy efficiency through rebates, workforce development, financing options, and technical advice- lowering costs, helping the environment, and fostering resilience.

**Food Animal Conservation Trust (FACT):** We believe that all food-producing animals should be raised in a humane and healthy manner, and that everyone should have access to safe and humanely produced food. Since 1982, FACT has been leading the charge to make that vision a reality. We provide critical resources to help farmers adopt humane practices, advocate for food safety, and guide consumers in making healthy food choices.

**Land for Good:** Working together to get more farmers on more land in New England and beyond. Entire communities will benefit from increased farming opportunity, healthy lands and a more secure food supply. We hope our work inspires you.

**National Audubon Society - Audubon Vermont:** Audubon Vermont is a state program of the National Audubon Society. Audubon Vermont is a nonprofit conservation organization whose mission is to protect birds and the places they need, today and tomorrow.

**Northeast Farmers of Color (NEFOC) Land Trust:** Act for a future of food and land sovereignty in the Northeast region, through permanent and secure land tenure for Indigenous, Black, Latinx, and Asian farmers who will relate with the land in a sacred manner that honors our ancestors' dreams – for regenerative farming, sustainable human habitat, ceremony, native ecosystem restoration, climate healing, and cultural preservation.

**Northeast Organic Farming Association of Vermont (NOFA-VT):** NOFA-VT is a nonprofit association of farmers, gardeners, and consumers working to promote an economically viable and ecologically sound Vermont food system for the benefit of current and future generations. NOFA-VT offers farmer services, advocacy, food access services, education and community building.

**Northeast Sustainable Agriculture Research and Education (SARE):** The Northeast Sustainable Agriculture Research and Education (SARE) Program offers grants and education to farmers, educators, service providers, researchers and others to address key issues affecting the sustainability of agriculture throughout our region. The program is administered by Northeast SARE's host institution, the University of Vermont.

**Organic Crop Improvement Association (OCIA):** OCIA offers organic certification and verification in certain states, as well as global market access. OCIA also offers micro-grants, scholarships for graduate students, and a Farmer of the Year Award.

## Non-Profit and Educational Organizations

**Organic Farming Research Foundation (OFRF):** OFRF works to cultivate organic research, education, and federal policies that bring more farmers and acreage into organic production through grants, educational resources, and advocacy.

**The University of Vermont (UVM) Extension:** UVM Extension integrates higher education, research and outreach to help individuals and communities put knowledge to work in their families and homes, farms, businesses, towns and the natural environment.

**The Environmental Mediation Center (EMC):** EMC designs and administers environmental and agricultural dispute resolution programs.

**Vermont Association of Conservation Districts (VACD):** VACD conducts educational, scientific, and charitable work concerning conservation, maintenance, improvement, development, and use of land, soil, water, trees, vegetation, fish and wildlife and other natural resources in Vermont.

**Vermont Land Trust (VLT):** VLT works to conserve land, support farmers in land purchase and business growth, improve natural resources, and uphold easements.

## State Organizations

**Vermont Agency of Agriculture, Food & Markets (VAAFMM):** VAAFMM facilitates, supports and encourages the growth and viability of agriculture in Vermont while protecting the working landscape, human health, animal health, plant health, consumers and the environment. VAAFMM hosts the Northeast Dairy Business Innovation Center (NE-DBIC), publishes Agriview, and administers multiple agricultural programs.

**Vermont Agency of Commerce & Community Development (ACCD):** ACCD encompasses multiple state departments and many programs that serve the Vermont public by enhancing the Vermont business climate, marketing Vermont to tourists and others, and strengthening our communities in a wide variety of ways. Departments include Economic Development, Housing, Community Development, Historic Preservation, and Tourism & Marketing.

**Vermont Department of Environmental Conservation (DEC):** While the DEC issues most of the state's environmental permits, the Department does more than just set forth regulations and assure compliance. Through its programs, the DEC manages water and air quality, regulates solid and hazardous wastes, and administers a number of voluntary pollution and waste reduction programs.

**Vermont Department of Forest, Parks, and Recreation (FPR):** FPR is responsible for the conservation and management of Vermont's forest resources, the operation and maintenance of the State Park system, and the promotion and support of outdoor recreation for Vermonters and our visitors. In addition, FPR is responsible for the acquisition, planning coordination and administration of all Agency of Natural Resources lands.

**Vermont Economic Development Authority (VEDA):** VEDA is Vermont's economic development finance authority, staffed by a seasoned group of Vermont professionals. With over 300 years in combined lending experience, the VEDA team is dedicated to meeting the financing needs of Vermont businesses and farms. Since 1974, VEDA has provided \$2.6 billion in low interest financing to Vermonters. Since inception, VEDA has helped businesses and farms create jobs for Vermonters and enhance Vermont's working landscape.

**Vermont Housing & Conservation Board (VHCB):** Vermont Legislature passed the Vermont Housing and Conservation Trust act in 1987, establishing VHCB. VHCB assesses and provides guidelines for population growth, finances affordable housing projects and funds conservation and preservation of agriculture lands, forestland, historic properties, and natural areas.

## Federal Organizations

**Agricultural Marketing Service (AMS):** AMS administers programs that create marketing opportunities for producers of food, fiber, and specialty crops. AMS also provides services to ensure quality and availability of wholesale food for consumer.

**Farm Production and Conservation (FPAC):** FPAC delivers programs and services to farmers and ranchers. FPAC consists of FSA, NRCS, RMA and the FPAC Business Center.

**Farm Service Agency (FSA):** FSA offers disaster assistance, insurance, price support, loans, and conservation programs to farmers, ranchers and forest landowners, which help producers invest in, improve, and expand their operations.

**Food and Nutrition Service (FNS):** FNS works to end hunger and improve food and nutrition security through a suite of more than 15 nutrition assistance programs, which serve 1 in 4 Americans over the course of a year.

**National Institute of Food & Agriculture (NIFA):** NIFA provides leadership and funding for programs that advance agriculture related sciences through research, education and extension activities, such as Sustainable Agriculture Research and Innovation (SARE).

**Natural Resources Conservation Service (NRCS):** NRCS provides technical assistance for planning and conservation practice implementation based on the producer's stewardship goals. NRCS may provide financial assistance for conservation and easements.

**Risk Management Agency (RMA):** RMA provides market based tools, such as Federal crop insurance, to manage risk and strengthen economic stability of producer operations and rural communities.

**Rural Development (RD):** RD offers loans, grants, and loan guarantees. RD offers technical assistance and information to help agricultural producers and cooperatives get started and improve the effectiveness of their operations. RD helps communities undertake empowerment programs and rural residents buy or rent safe, affordable housing and make healthy and safe home repairs.

**United States Fish and Wildlife Service (FWS):** FWS Partners for Fish and Wildlife Program leverages resources available through Farm Bill conservation programs to expand the conservation footprint and help landowners adopt land use practices that serve their needs while benefiting fish and wildlife.



# Table of Contents

## Business Development, Research, & Innovation



### Agricultural Marketing Service (AMS)

**25** Farmers Market Promotion Program (FMPP) (Develop, Coordinate and Expand Direct Producer to Consumer Markets)

**26** Local Food Promotion Program (LFPP) (Coordinate and Expand Local and Regional Food Business Enterprises)

### Food and Nutrition Service (FNS)

**27** Farm to School Grant Program (Support for Farm to School Programs)

### National Institute of Food and Agriculture (NIFA)

**28** Beginning Farmer & Rancher Development (Programs to Sustain Beginning Farmers and Ranchers)

**29** Small Business Innovation Research Program (Research Related to Scientific Problems and Opportunities in Agriculture)

### Northeast Sustainable Agriculture Research and Education (SARE)

**30** Farmer Grant Program (On Farm Research to Expand Farm Businesses)

### Rural Development

**31** Meat & Poultry Processing Expansion (Capacity Building for Prospective or Current Processors)

**32** Value Added Producer Grant (Processing and Marketing of New, Value Added Agricultural Products)

### Natural Resources Conservation Service (NRCS)

**33** Conservation Innovation Grants (CIG) (Large Programs to Develop Agricultural Innovation)

### The University of Vermont (UVM) Extension

**34** Farm Viability (Business, Cash Flow, Enterprise, Transition, and Transfer Plans as well as Clinics)

**35** Northeast Direct Vegetable Benchmark (Financial Benchmarking for Produce Farm Owners)

**36** Water Quality Business Analysis (Strategic Planning, Integrating Conservation, and Business Planning)

# Table of Contents

## Business Development, Research, & Innovation



### Vermont Agency of Agriculture, Food & Markets (VAAFAM)

- 37** Community Supported Agriculture Grant
- 38** Farm First (Stress Support)
- 39** Farm to School and Early Childhood Grant
- 40** Farm to School Vision Grant
- 41** Local Food Market Development Grant
- 42** VT Specialty Crop Block Grant (Specialty Crops that Benefit Multiple Farms)
- 43** Trade Show Assistance Grant (Out of State Trade Show Attendance)
- 44** Working Šands Enterprise Initiative (Business Development Grant)

### Vermont Housing & Conservation Board (VHCB)

- 21** Farm & Forest Viability Program (Business CoachingD)

## Construction, Equipment, & Engineering



- 17** Equipment Rental Directory

### Agricultural Container Recycling Council

- 24** Ag Plastic Recycling Program

### Natural Resources Conservation Service (NRCS)

- 18** Environmental Quality Incentives Program (EQIP)

### Rural Development

- 22** Farm Labor Housing (Financing)

### Vermont Agency of Agriculture Food & Markets (VAAFAM)

- 19** Capital Equipment Assistance Program (CEAP) (Equipment Procurement)
- 20** Farmstead Best Management Practices Program (BMP) (Manure Management)

### Vermont Agency of Commerce & Community Development (ACCD)

- 23** Historic Barn Preservation Grant (Historic Barn Repairs and Enhancement)

### Vermont Housing and Conservation Board (VHCB)

- 21** Farm & Forest Viability Program (Water Quality Grants)

# Table of Contents

## Croplands



### Natural Resources Conservation Service (NRCS)

- 45** Agricultural Management Assistance Program (AMA) (Manage Financial Risk)
- 48** Conservation Stewardship Program (CSP) (Conservation Planning)
- 18** Environmental Quality Incentives Program (EQIP) (Soil, Water, Air, Plant, Animal, Human Improvements)

### Vermont Agency of Agriculture, Food & Markets (VAAFMM)

- 47** Farm Agronomic Practices Program (FAP) (Cropping & Grazing)
- 48** Grassed Waterway & Filter Strip Program (GWFS) (Erosion & Runoff)
- 49** Pay for Performance Program (PFP) (Phosphorus Incentive on Cropland and Pastureland)
- 50** Pesticide Program and Resources

### United States Fish and Wildlife Service (FWS)

- 51** Partners for Fish and Wildlife Program (Planning, Design, and Supervision of Restoration Projects)

### Department of Environmental Conservation (DEC)

- 52** Clean Water Initiative Design and Implementation Block Grant (Engineering Design and Implementation for Water Quality Improvements)

### Franklin County Natural Resources Conservation District (FCNRCD)

- 53** Signs of Conservation

### Regional Conservation Partnership Program (RCPP)

- 54** Map of Projects

### Regional Organizations

- 55** Tree Plantings (Native Trees and Shrubs)

### Natural Resources Conservation Districts (NRCDs)

- 56** Agricultural Support

### Vermont Association of Conservation Districts (VACD)

- 57** Required Agricultural Practices (RAP) Quiz

# Table of Contents

## Dairy Business Support



**58** Northeast Dairy Business Innovation Center (NE-DBIC) General Information

Farm Service Agency (FSA)

**59** Dairy Margin Coverage Program (Related to Fluid Milk Prices)

The University of Vermont (UVM) Extension

**60** Dairy Business & Herd Management Technical Assistance (Dairy Specific Support)

## Energy



Efficiency Vermont

**61** Agricultural Loan (Financing for Energy Efficient Improvements)

Natural Resources Conservation Service (NRCS)

**18** Environmental Quality Incentives Program (EQIP) (Energy Management Plans)

Rural Development

**62** Rural Energy for America Program (REAP) (Renewable Energy Systems and Improvements)

Vermont Department of Environmental Conservation (DEC)

**63** Diesel Emissions Reduction Financial Assistance Program (Engines, Vehicles & Equipment)

Vermont Economic Development Authority (VEDA)

**64** Agricultural Energy Loan Program (Loans for Renewable Energy and Energy Efficient Projects)

# Table of Contents

## Forestry & Maple



### Audubon Vermont

**65** Bird Friendly Maple Project

### Vermont Agency of Natural Resources Department of Forests, Parks & Recreation

**66** Resources for Loggers (Training, Equipment, Support)

**102** County Foresters (List of Vermont County Foresters)

**67** Forest Legacy Program (Forestland Conservation)

**68** Use Value Appraisal Program (Forestland Valuation)

**69** Resources for Trail Stewardship (Public Trail Installation and Maintenance)

**70** Vermont Invasives - Forest Pests (Species to be aware of, Reporting, Resources)

### Natural Resources Conservation Service (NRCS)

**18** Environmental Quality Incentives Program (EQIP) (Forest Management Plans, Forest Stand Improvement, Invasive Control)

### The University of Vermont (UVM) Extension

**71** Forest Business Education & Planning Assistance (Individual Assistance, Clinics, and Roundtable)

**72** Maple Resources

### United States Fish and Wildlife Service (FWS)

**51** Partners for Fish And Wildlife Program (Consultations, Stream Bank Stabilization, Invasive Species Control)

### Vermont Housing & Conservation Board (VHCB)

**21** Farm & Forest Viability (Business Coaching)

# Table of Contents

## Grazing



### Food Animal Concerns Trust (FACT)

**73** Fund a Farmer Grant (Start or Improve Grazing)

### Natural Resources Conservation Service (NRCS)

**18** Environmental Quality Incentives Program (EQIP) (Grazing Management Plans, Fencing, Lane ways, Crossings, Water Systems)

### The University of Vermont (UVM) Extension

**74** Grazing and Livestock Program (Technical Grazing Assistance)

### Vermont Agency of Agriculture, Food & Markets (VAAFMM)

**75** Pasture and Surface Water Fencing Program (Livestock Exclusion from Surface Water)

## Historically Underserved Farmers and Ranchers



### Farm Production and Conservation

**76** Guide to USDA Resources for Historically Underserved Farmers and Ranchers

### Natural Resources Conservation Service (NRCS)

**18** Environmental Quality Incentives Program (EQIP) (Urban/Suburban, Specialty Crops, Small Acreage, and Subsistence Operations)

### The University of Vermont (UVM) Extension

**77** Classes for Aspiring and Beginning Farmers

**78** Farmworker Resources

**79** New Farmer Project

**80** Women's Agricultural Network

# Table of Contents

## Land Easement & Rentals

---



### Farm Service Agency (FSA)

**81** Conservation Reserve Program (CRP) - General Enrollment  
(Reserving Certain Areas by Halting Production)

**82** Conservation Reserve Program (CRP) - Continuous Enrollment

### Land for Good

**83** Farm Access Methods Guide and Guide to Leasing Land for Farming

### Natural Resources Conservation Service (NRCS)

**84** Agricultural Conservation Easement Program - Agricultural Land Easement  
(ACEP-ALE)

**85** Agricultural Conservation Easement Program - Wetland Reserve  
Easement (ACEP-WRE)

### Northeast Farmers of Color (NEFOC) Land Trust

**86** Advancing Equitable Land Access

### University of Vermont (UVM) Extension

**87** Succession Planning Resources

### Vermont Housing and Conservation Board

**88** Farmland Conservation Program (Conservation Easement)

### Vermont Agency of Agriculture, Food & Markets (VAAFAM)

**89** Conservation Reserve Enhancement Program (CREP) (Stream side  
Incentives)

### Vermont Land Trust (VLT)

**90** Farmland Conservation

# Table of Contents

## Natural Disaster

---



### Farm Service Agency (FSA)

**91** Emergency Conservation Program (Repair Damaged Farmlands)

**92** Non insured Crop Disaster Assistance Program (Assistance for Non insured)

### Northeast Organic Farming Association of Vermont (NOFA VT)

**93** Farmer Emergency Fund (Funds for Organic Farms)

## Organic

---



### Vermont Agency of Agriculture, Food & Markets (VAAFAM)

**94** Organic Certification Cost Share Program (Reimbursement for Certain Fees and Costs)

### Natural Resources Conservation Service (NRCS)

**18** Environmental Quality Incentives Program (Organic Transition Support)

### Organic Crop Improvement Association (OCIA)

**95** Microgrant for Research and Education (On Farm Research)

### Organic Farming Research Foundation (OFRF)

**96** Grants Program (On Farm Research)



## Table of Contents

### Recognition, Scholarships, & Stipends

---



Northeast Organic Farming Association of Vermont (NOFA VT)

**97** Vermont Family Farmer of the Month

The Fruit Guys

**98** Small Farm Microgrant

Vermont Land Trust (VLT)

**99** Eric Rozendaal Memorial Award

Vermont Farm Women's Fund (VFWF)

**100** Scholarships and Stipends

### Resolution of Disputes

---



The Environmental Mediation Center (EMC)

**101** Vermont Agricultural Mediation Program (VTAMP) (Mediation for Agricultural Disputes)

### Vermont Directories

---



**102** County Foresters

**103** Farm Service Agency (FSA) Directory

**104** Natural Resources Conservation Service (NRCS) Directory

**105** Natural Resources Conservation Districts (NRCD) Directory

# Equipment Rental Directory

## Connecticut River Watershed Farmers Alliance Equipment Rental Library

10 Benning Street #245, West Lebanon NH 03784; (802) 457-2230

Service Area: Connecticut River Watershed in VT and NH

Equipment: No-till Drills, Roller Crimper, Portable Truck Scales

## Orleans County Natural Resources Conservation District

59 Waterfront Plaza, Newport VT 05855; (802) 334-6090 x 7008

Service Area: Orleans County and neighboring region

Equipment & Services: No-Till Drill (Sunflower 9412 -Aerator (Aerway - 20 ft), Portable Truck Scales (Set of 6 GEC MD 500 portable wheel load truck scales), Soil Probes, Portable Skidder Bridge, Manure Sample Shipping Service, Soil Sampling

## Poultney-Mettowee Natural Resources Conservation District

PO Box 209, Poultney VT 05764; (802) 558-6470

Service Area: Southern Addison, Rutland, and Bennington Counties.

Equipment: No-Till Drill (10ft), Aerator (8ft), Portable Truck Scales

## UVM Extension Middlebury Office

23 Pond Lane, Suite 300, Middlebury VT 05753; (802) 388-4969

Service Area: Addison County and neighboring regions

Equipment: No-Till Drills (10ft), Portable Truck Scales

## UVM Extension Rutland

271 North Main St, Rutland VT 05701; (802) 773-3349

Service Area: Rutland County

Equipment: Soil Probes

## UVM Extension St. Albans Office

278 So. Main Street, St. Albans, VT 05478; (802) 524-6503

Service Area: 75-mile radius of St. Albans, unless part of a larger project or special arrangement.

Equipment & Services: No-Till Drills (10ft, 12ft, 15ft), Manure Spreader (Tebbes), Subsoiler (Krause), Interseeder (15ft), Cover Crop Seeding Service, Interseeding Service, Reduced-till Corn Planting Service.

## Connecticut River Watershed Farmers Alliance Equipment Rental Library

10 Benning Street #245, West Lebanon NH 03784; (802) 457-2230

Service Area: Connecticut River Watershed in VT and NH

Equipment: No-till Drills, Roller Crimper, Portable Truck Scales

## Winooski Natural Resources Conservation District

617 Comstock Road, Suite 1, Berlin, VT 05602 AND 300 Interstate Corporate Center, Suite 200 Williston VT 05495; (802) 288-8155 Ext 104 (Williston) (802) 828-4493 (Berlin), or [info@winooskinrcd.org](mailto:info@winooskinrcd.org)

Service Area: Chittenden, Washington and Orange Counties

Equipment & Services: Aerator (11.25 ft), Soil Probes, Soil Sampling Service



There are additional NRCDs that do not offer equipment rentals, but may offer additional agricultural support and services.

Navigate to the full Directory on page 105

# Natural Resources Conservation Service (NRCS) Environmental Quality Incentives Program (EQIP)

Includes  
Maple  
Producers

Through EQIP, NRCS provides agricultural producers and non-industrial forest managers potential financial resources and one-on-one help to plan and implement improvements, or what NRCS calls conservation practices. Using these practices can lead to cleaner water and air, healthier soil and better wildlife habitat, all while improving agricultural operations. Through EQIP, you can voluntarily implement conservation practices, and NRCS can assist you with implementation of these practices.

## Process

Apply at your local Natural Resources Conservation Service Field Office. There is a list of these offices toward the end of this guide. After applying, you will be assigned a Planner, where they will look at natural resource conditions, problems, and concerns, as well as opportunities. The Planner will determine the objectives of the client, and perform an inventory and analysis of resources. Next, the Planner will formulate and evaluate alternatives to achieve client objectives and solve natural resource concerns, implementing a variety of economic and technical strategies. The Client selects their preferred alternatives. The Client's application is ranked and a contract may be offered. The Client implements the plan. The Planner provides detailed information related to design, layout, inspection, and certification. The plan's effectiveness is evaluated and adjustments are made as needed.

## Eligibility

Land: Cropland, hayland, rangeland, pastureland, non-industrial private forestland, other farm and ranch lands, urban/suburban, specialty crop operations, subsistence operations, environmentally sensitive areas

Applicants: Agricultural producers, owners of non-industrial private forestland, Indian Tribes, those with an interest in agriculture or forestry operations, and water management entities

Other Requirements: Records should be current for proposed land and indicate the applicant controls the eligible land. The applicant should meet AGI and payment limitation provisions. The land should be in compliance with wetland requirements

## FAQ

- Multiple NRCS conservation initiatives are incorporated into the NRCS General EQIP Program
- Historically underserved producers are eligible for advanced payments
- Priority practices and their corresponding payments are determined on an annual basis

## Example Practices

Nutrient management, waste storage facility, heavy use area protection, livestock pipeline, pumping plant, stream crossing, fence, access roads, diversion, forest stand improvement are some common examples.

Ready to Apply? Contact your local NRCS Office. Field Offices can be found on page 104, or at <https://www.nrcs.usda.gov/wps/portal/nrcs/main/vt/contact/local/>

# Vermont Agency of Agriculture, Food & Markets (VAAFMM)

## Capital Equipment Assistance Program (CEAP)

Financial assistance is available for new or innovative equipment that will aid in the reduction of surface runoff of agricultural wastes to state waters, improve water quality of state waters, reduce odors from manure application, separate phosphorus from manure, decrease greenhouse gas emissions, and reduce costs to farmers when they apply manure.



Apply by November 1st



Cost-share reimbursement up to 90%. Does not include shipping freight/travel

### Eligibility:

- Farms required to meet RAPs, custom operators, businesses, non-profit organizations, phosphorus extraction equipment providers.
- Limit 1 application per individual per funding opportunity. If you applied previously and were not awarded, you are eligible to apply.
- Recipient must be able to finance equipment as program is reimbursement based.
- Individual project eligibility varies year to year.

### Application should include:

- Quotes: 1 to 2 for requested equipment that detail equipment provider, make, model, cost, and installation cost. Examples of equipment include conservation tillage equipment, no-till grain drills, roller crimpers, precision agriculture equipment such as flow meters and data loggers, manure injectors, dragline systems, phosphorus removal equipment / technology. \*Certain equipment has monetary caps.
- Acreage: Committed usage of equipment for next 5 years. This goal must be met to funding must be repaid. A major aspect in ranking considers the scale of the equipment's conservation value on an acreage basis. The recipient should be committed to reporting the use of equipment annually for 3 years at intended scale.
- Listed Service Provider: Establish a Provider to assist in application, such as a Conservation District or UVM Extension.
- Financial Backing: Ensure backing from financial institution or matching funds.
- Letter: An unbiased letter of support.



Apply Online  
[www.Agriculture.Vermont.gov/ceap](http://www.Agriculture.Vermont.gov/ceap)



AGR.WaterQuality@Vermont.gov  
(802) 622-4098

# Vermont Agency of Agriculture, Food & Markets (VAAFM) Farmstead Best Management Practices (BMP) Program

The Agricultural Engineering Section assists farmers with on-farm improvements designed to abate non-point source agricultural waste discharges.

## Technical Assistance



Apply Year-Round



No Cost



Apply when a water quality concern is identified, or when a permitting variance is needed

## EQIP-Assist



Apply Year-Round



Offers additional cost-share on EQIP practices.

Max \$200,000 per grant agreement every 3 years. Capped at the lesser of \$200,000, 90%, or the EQIP contract amount related to BMP approved practices.



Apply after you have an approved EQIP contract in place

## Design & Construction



Deadline is April 1st, applications after this deadline are rolled to the next year



Max \$100,000 per year, no more than \$200,000 per 3 years. Each grant is capped by the lesser of \$100,000 or 90% cost share.



Eligibility:

- Farm must be required to meet RAPs
- Design must meet NRCS Standards or designed and certified by an engineer licensed in VT + design is equivalent to federal performance standards and specifications
- Must receive the grant prior to construction
- Farmer must finance, then be reimbursed  
Payment rates are determined by invoices
- Applicant's equipment and labor costs can be reimbursed

Manure storage, composting stack pads, bedded pack, barnyard runoff collection, gutters, ditches, laneways, stream crossings, exclusion fencing, watering facilities, milk house waste collection and treatment, silage leachate collection



Apply Online  
[www.Agriculture.Vermont.gov/bmp](http://www.Agriculture.Vermont.gov/bmp)



Jenn LaValley, VAAFM (802) 828-2431  
[jenn.lavalley@vermont.gov](mailto:jenn.lavalley@vermont.gov)

# Vermont Housing & Conservation Board (VHCB)

## Vermont Farm & Forest Viability Program

Includes  
Maple  
Producers

Established in 1987, the Vermont Housing & Conservation Board remains the forerunner in the nation in pioneering a comprehensive approach to affordable housing and community development linked with land conservation and historic preservation. The Board's enabling statute is: The Vermont Housing and Conservation Trust Fund Act, 10 V.S.A. Chapter 15, §§302-325a. Programs include Housing, Conservation, Vermont Farm & Forest Viability, Healthy & Lead-Safe Homes, VHCB AmeriCorps, Rural Economic Development Initiative, Leadership, Farmland Access, Water Quality, Energy Efficiency and Food Access and Affordable Housing.

### Farm Business Coaching

The Vermont Farm & Forest Viability Program offers business planning, technical assistance, and grant opportunities to Vermont's commercial-scale farm, food, and forest products enterprises to help them achieve long-term success.

Businesses enrolled in the Viability Program can work with a professional advisor on a variety of topics, including:

- Business Planning
- Enterprise & Feasibility Analysis
- Management Coaching
- Financial Record-Keeping & Cash Flow Management
- Marketing & Sales
- Human Resources Management
- Retirement & Ownership Succession Planning
- Planning Capital Improvements & Accessing Financing
- Land Access & Conservation Assistance

Eligibility: Must be based in Vermont, have at least 2 years managing this or another related business, and the business must be commercial scale with a gross minimum of \$15k annually.

Viability Program Services are delivered by professional business advisors at service provider organizations located throughout the state. They include the Center for an Agricultural Economy (CAE), Intervale Center, Land for Good, Northeast Organic Farming association (NOFA-VT), UVM Extension, and others.

### Vermont Housing & Conservation Board

58 East Street, Montpelier, VT 05602

(802) 828-3250

info@vhcb.org

Calley Hastings

calley@vhcb.org

https://vhcb.org/

View Funding Opportunities for Water-  
Quality Related Projects at  
[www.vhcb.org/wqg](http://www.vhcb.org/wqg)

# Rural Development Farm Labor Housing

This program provides affordable financing to develop housing for year-round and migrant or seasonal domestic farm laborers. This program assists qualified applicants who cannot obtain commercial credit on terms that will allow them to charge rents that are affordable to low-income tenants.

## Details



Apply by November 1st



Loan term up with payback period up to 33 years @ fixed rate 1% for on-farm housing



Refer to notice of solicitation for applications (NOSA) in federal register

Who  
may live in  
the housing?

Domestic farm laborers, retired and / or disabled farm laborers. \*Must be a U.S. citizen or permanent resident\*

## Eligible Practices

- Construction, improvement, repair and purchase of housing for domestic farm laborers
- Purchase and improvement of land
- Purchasing of household furnishings
- Paying construction loan interest

What  
governs this  
program?

Off-Farm: 7 CFR 3560 Subpart L  
On-Farm: 7 CFR 3560 Subpart M  
Title V of the Housing Act of 1949



Laurie Warzinski, Rural Development Northeast Region Regional Director  
MFHFODNortheast@usda.gov

<https://www.rd.usda.gov/programs-services/multifamily-housing-programs/farm-labor-housing-loans>

# Vermont Agency of Commerce & Community Development (ACCD) Historic Barn Preservation Grant

Established in 1992, the State-funded Barn Preservation Grant program helps individuals, municipalities, and non-profit organizations to rehabilitate the historic agricultural buildings that are a symbol of Vermont's rural landscape. This is the oldest state-funded agricultural-based grant program in the United States. Since its inception, the program has provided over \$3 million towards the preservation of over 360 historic barns and agricultural outbuildings around the state. Preservation of these buildings not only protects Vermont's agricultural and architectural legacies, but it also generates jobs, supports independent businesses, increase civic participation, and bolsters a community's sense of place while enhancing the experience of visitors.

## Details



Announcement in August



Reimbursement up to  
\$15,000



Email Application to:  
[accd.barngrants@vermont.gov](mailto:accd.barngrants@vermont.gov)  
or mail to address on application

## Eligibility

- Individuals, businesses, and non-profit organizations may apply.
- Property must be listed or determined eligible for listed in the State Register of Historic Places.
- Project cannot start until grant has been awarded.
- Barn does not have to be in use.
- Practices: Historic barn preservation, repairs and / or enhancement.
- Ineligible: Improvements, new construction, electrical, plumbing, heating, planning projects.

## Ranking

Feature Preservation: Aim of preserving historic, character-defining features.

Urgency of Need: Degree of failing of structural components; degree of damage or deterioration.

Corrective Measures: Necessity of repairs to prevent structural failure.

Enhancement and Restoration: Replacement or enhancement of features critical to its historical or architectural significance.

Public Benefit: Public access or visibility, community symbolism or landmark representation.

Planned Use: Planned and committed maintenance and use of structure.

Location: Geographic distribution may be used in the event of a tie.

Application Quality: Points for clarity and applications exceeding minimum requirements.



Vermont Agency of Commerce and  
Community Development  
Caitlin Corkins, Tax Credits and Grants  
Coordinator  
1 National Life Dr.  
Davis Bldg, 6th Floor  
Montpelier, VT 05620-0501  
(802) 828-3047  
[office.accd@vermont.gov](mailto:office.accd@vermont.gov)



# Agricultural Container Recycling Council (ACRC)

## Plastic Recycling Program

The ACRC is a not-for-profit organization that works to facilitate the collection and recycling of one-way rigid HDPE plastic agricultural crop protection, specialty pest control, animal health, micronutrient/fertilizer, and/or adjuvant product containers. This is done through member funding of cost-effective programs that fosters public health and safety, environmental protection, resource conservation and end-user convenience. The ACRC is fully funded by our member companies and affiliates that formulate, produce, package, and distribute crop protection and other pesticide products.

### Information

#### What Can I Recycle?

The ACRC program accepts rigid high-density polyethylene (HDPE) 55-gallon containers and smaller, which previously held products utilized in agricultural crop protection (pesticides), animal health, specialty pest control, micronutrient, biologicals, fertilizer, and/or adjuvant products for professional application.

More information on types of plastic that can be recycled: <https://www.agrecycling.org/recycling-other-ag-plastics/>

#### What Happens to the Plastic?

Currently, the ACRC collects around 11,000,000 lbs. of HDPE annually. This plastic is then processed to create sellable, recycled resin which is repurposed into many useful products. The Ag Container Recycling Council is continually evaluating and approving a wide array of end uses

### Link

You can learn more about this program at ACRC's website:  
[www.agrecycling.org](http://www.agrecycling.org)

### Contact

Phone: 877-952-2272  
Email: [info@agrecycling.org](mailto:info@agrecycling.org)

Ag Container Recycling Council P. O.  
Box 1928  
Apex, NC 27502

Where is the recycling facility?

6949 Park Road  
Orrstown, PA 17244  
(717) 446-9917  
[info@agplasticsolutions.com](mailto:info@agplasticsolutions.com)

# Agricultural Marketing Service (AMS) Farmers Market Promotion Program (FMPP)

The United States Department of Agriculture (USDA) Agricultural Marketing Service (AMS) Farmers Market Promotion Program (FMPP) funds projects that develop, coordinate, and expand direct producer-to-consumer markets to help increase access to and availability of locally and regionally produced agricultural products by developing, coordinating, expanding, and providing outreach, training, and technical assistance to domestic farmers markets, roadside stands, community-supported agriculture programs, agritourism activities, on-line sales, or other direct producer-to-consumer (including direct producer-to-retail, direct producer-to-restaurant and direct producer-to-institutional marketing) market opportunities.



Check Website  
for Application  
Announcement



\$50,000 - \$500,000 award  
with 25% cash or in-kind  
match



Apply at  
<https://www.grants.gov>

## Projects

Long-term organizational capacity in the development, coordination, and expansion of direct producer-to-consumer market opportunities. Projects can include, but are not limited to:

- market analysis and strategic planning
- producer or market manager training and education
- online sales operation or expansion
- producer and consumer outreach

## Eligibility

Agricultural businesses and cooperatives, producer networks or associations, Community Supported Agriculture (CSA) networks and associations, food councils, local governments, nonprofit and public benefit corporations, economic development corporations, regional farmers' market authorities, and tribal governments are eligible to apply.

## Contact

[FMLFPPgrants@USDA.gov](mailto:FMLFPPgrants@USDA.gov)

<https://www.ams.usda.gov/services/grants/fmpp>

# Agricultural Marketing Service (AMS) Local Food Promotion Program (LFPP)

The United States Department of Agriculture (USDA) Agricultural Marketing Service (AMS) Local Food Promotion Program (LFPP) funds projects that develop, coordinate, and expand local and regional food business enterprises that engage as intermediaries in indirect producer-to-consumer marketing to help increase access to and availability of locally and regionally produced agricultural products. Grants can be used for the planning stages of establishing or expanding a local and regional food business enterprise, or to improve or expand a food business that supports locally and regionally produced agricultural products and food system infrastructure by performing feasibility studies, market research, training and technical assistance for the business enterprise and/or for producers working with the business enterprise. A 25% match is required.

## Assistance



Check Website for Application  
Announcement



Minimum \$25,000 Maximum  
\$500,000 25% match required

## Eligibility

Agricultural businesses and cooperatives, producer networks or associations, Community Supported Agriculture (CSA) networks and associations, food councils, local governments, nonprofit and public benefit corporations, economic development corporations, regional farmers' market authorities, and tribal governments are eligible to apply.

## Contact

FMLFPPgrants@usda.gov

<https://www.ams.usda.gov/services/grants/lfpp>

## Projects

### Planning

- feasibility studies
- hiring experts to provide training or technical assistance
- business development plans

### Implementation

- development or expansion of food incubator programs or mid-tier value chains
- provision of technical assistance or financial support for food safety measures producers may have to implement to expand marketing opportunities
- adoption of new online technology or virtual marketplace

### Farm to Institution

- Aggregation, processing, distribution, and storage of products
- market development
- business plan and strategy development
- food safety certification and improvements



Apply at

<https://www.grants.gov>

# Food and Nutrition Service (FNS) Farm to School Grant Program

The Richard B. Russell National School Lunch Act (NSLA) (42 USC 1751 et seq.) establishes a Farm to School Program in order to assist eligible entities, through grants and technical assistance, in implementing farm to school programs that improve access to local foods in USDA Food and Nutrition (FNS) Child Nutrition Programs, including the National School Lunch Program (NSLP), School Breakfast Program (SBP), Child and Adult Care Food Program (CACFP), and Summer Food Service Program (SFSP). Each year \$5 million is provided to the Department of Agriculture (USDA) to support grants, technical assistance, and other activities related to USDA's Farm to School Program. Additional funding for the Farm to School Program was made available from the FY 2018 through FY 2021 agriculture appropriations acts and, as a result, USDA expects to award approximately \$12 million under this solicitation. The USDA Farm to School Grant Program is administered by the Food and Nutrition Service (FNS) Office of Community Food Systems (OCFS).

## Example Projects

- Make local food products available on the menu of the eligible school
- Serve a high proportion of children who are eligible for free or reduced price lunches
- Incorporate experiential nutrition education activities in curriculum planning that encourage the participation of school children in farm and garden-based agricultural education activities
- Demonstrate collaboration between eligible schools, nongovernmental and community-based organizations, agricultural producer groups, and other community partners
- Include adequate and participatory evaluation plans
- Demonstrate the potential for long-term program sustainability
- Meet any other criteria that the Secretary determines appropriate

## Practices

- Training;
- Supporting operations;
- Planning;
- Purchasing equipment;
- Developing school gardens;
- Developing partnerships; and
- Implementing farm to school programs

## Contact

<https://www.fns.usda.gov/cfs/farm-school-grant-program>

FarmToSchool@usda.gov

# National Institute of Food & Agriculture (NIFA) Beginning Farmer & Rancher Development Program

Beginning farmer education for adult and young audiences in the United States can generally be traced back to the advent of the 1862 and 1890 Morrill Land-Grant Acts. But, for the first time, the Food, Conservation, and Energy Act of 2008 (Pub .L. No. 110-234, Section 7410) appropriated \$75 million for FY 2009 to FY 2012 to develop and offer education, training, outreach and mentoring programs to enhance the sustainability of the next generation of farmers. The anticipated amount available for Beginning Farmer and Rancher Development Program (BFRDP) through the USDA National Institute of Food and Agriculture grants is approximately \$19 million in FY 2022

## Projects

Simplified Standard Grants: Simplified Standard Grants are intended to assist organizations:

- 1) To sustain and enhance important collaborations and innovative activities relevant to beginning farmer and rancher programs
- 2) To initiate and develop beginning farmer and rancher project ideas to lead to future program success or success in obtaining other grants for beginning farmer and rancher education

Educational Team Projects: The long-term goals of Educational Team (ET) projects are to identify gaps in beginning farmer and rancher training by evaluating all existing programs, and to develop and conduct train-the-trainer projects to address these gaps.

Curriculum and Training Clearinghouse: The purpose of the Curriculum and Training Clearinghouse is to serve as an online platform and library for curricula, training materials, technical assistance materials and any other appropriate information for beginning farmers and ranchers. The Online Clearinghouse assists NIFA leadership in developing and providing an outcome-based results verification system appropriate for use by the BFRDP, provides archival support for all materials and curricula on beginning farmer education and training, organizes appropriate meetings (both in-person and electronic, i.e., webinars, conference calls) under the direction of NIFA leadership and collaborates with BFRDP grantees as needed.

## Contact

<https://www.nifa.usda.gov/grants/programs/beginning-farmer-rancher-development-program-bfrdp>

Denis Ebodaghe, National Program Leader  
denis.ebodaghe@usda.gov  
805 Pennsylvania Avenue Kansas City, MO 64105  
(202) 445-5460

# National Institute of Food & Agriculture (NIFA) Small Business Innovation Research Program

INCLUDES  
MAPLE  
PRODUCERS

The Small Business Innovation Research (SBIR) program at the U.S. Department of Agriculture (USDA) National Institute of Food and Agriculture (NIFA) offers competitively awarded grants to qualified small businesses to support high quality research related to important scientific problems and opportunities in agriculture that could lead to significant public benefits. The program stimulates technological innovations in the private sector and strengthens the role of federal research and development in support of small businesses. The SBIR program also fosters and encourages participation by women-owned and socially or economically disadvantaged small businesses.



PHASE I announced July  
PHASE II announced December



Phase I \$100,000  
Phase II \$600,000

## Projects

### Small Business Innovation Research (SBIR) Topics

- Forests and Related Resources
- Plant Production and Protection - Biology
- Animal Production and Protection
- Conservation of Natural Resources
- Food Science and Nutrition
- Rural Development
- Aquaculture
- Biofuels and Biobased Products
- Small and Mid-Size Farms
- Plant Production and Protection -- Engineering

Participation by university faculty or government scientists in SBIR projects is strongly encouraged.

Faculty or scientists can serve as consultants or can receive a subcontract (in both cases, payment is limited to no more than 1/3 of the Phase I award or 1/2 of the Phase II award) and continue to work full time at their institution. University faculty or government scientists can also reduce employment at their institution to 49% for the duration of the grant.

Must qualify as a small business concern for research and development (R&D) purposes at the time of award.

In addition, the primary employment of the project director (PD) must be with the small business concern at the time of award and during the conduct of the proposed research.

## Contact

Melinda Coffman, Program Coordinator  
Melinda.Coffman@usda.gov

UVM Extension Contact:  
<https://www.uvm.edu/extension/contact-us-form>  
(802) 656-2990

# Northeast Sustainable Agriculture Research & Innovation (SARE) Farmer Grant Program

The Northeast Sustainable Agriculture Research and Education (SARE) Program offers grants and education to farmers, educators, service providers, researchers and others to address key issues affecting the sustainability of agriculture throughout our region. The program serves Connecticut, Delaware, Massachusetts, Maryland, Maine, New Hampshire, New Jersey, New York, Pennsylvania, Rhode Island, Vermont, West Virginia, and Washington, D.C. The program is administered by Northeast SARE's host institution, the University of Vermont.

## Projects

Farmer Grants are for commercial producers who have an innovative idea they want to test using a field trial, on-farm demonstration, marketing initiative, or other technique.

Farmer Grant projects should seek new knowledge other farmers can use and address questions that are directly linked to improved profits, better stewardship, and stronger rural communities.

A technical advisor—often an extension agent, crop consultant, other service professional or farmer with advanced expertise—must also be involved.

Projects should seek results other farmers can use, and all projects must have the potential to add to our knowledge about effective sustainable practices.

Average projects last 1 to 3 years

Farmer Grant recipients are expected to collect and manage reliable data about their project and convey this information clearly through annual and final reports.

Funds can be used to conduct the research project including paying farmers for their time, for project-related materials, for project costs like consulting fees or soil tests, and any communications or outreach expenses associated with telling others about project results.

This grant program is not meant to help start or expand farm businesses. Farmer Grant funds cannot be used for capital costs associated with building a barn, greenhouse, or other major farm fixture, nor can funds be used to start a farm, purchase durable equipment like tractors or computers, or for any utility, telephone, or other costs that would be there in the absence of the project.

## Contact

<https://northeast.sare.org/grants/get-a-grant/farmer-grant-program/>  
University of Vermont  
140 Kennedy Drive, Suite 202  
South Burlington, VT 05403  
(802) 651-8335



Announcement  
Summer 2022



Up to \$30,000

Includes  
Maple  
Producers

# Rural Development

## Meat & Poultry Processing Expansion Program

The USDA Rural Development Meat and Poultry Processing Expansion Program (MPPEP) provides grants to help eligible processors expand their capacity. USDA Rural Development designed the MPPEP to encourage competition and sustainable growth in the U.S. meat processing sector, and to help improve supply chain resiliency.



April 11th, 2022



Max \$25 million, or 20% of total project costs, whichever is less. No minimum.

### Ranking

- Building new – or modernizing or expanding existing – processing facilities
- Developing, installing, or modernizing equipment and technology
- Ensuring compliance with packaging and labeling requirements
- Upholding occupational and other safety requirements
- Modifying facilities or equipment to protect food safety
- Paying for voluntary grading services on value-added processed products
- Offsetting costs associated with becoming an inspected facility
- Supporting workforce recruitment, training, and retention

### Eligibility

Sole proprietor businesses or other entities that engage – or want to engage – in meat and poultry processing

### Requirements

The Applicant Must:

- Process – or plan to process – one or more species subject to the Federal Meat Inspection Act, or the Poultry Product Inspection Act
- Have – or plan to get – a Federal Grant of Inspection through USDA's Food Safety and Inspection Service, a Grant of Inspection under the Cooperative Interstate Shipment Program, or a federal equivalent Tribal or state-based meat and poultry inspection program
- Comply with the National Environmental Policy Act and Section 106 of the National Historic Preservation Act, and all other applicable state, local or Tribal laws

The Meat & Poultry Processing Expansion Program offers only an online 'Ask a Question' form.

Please contact your local Natural Resources Conservation District for additional assistance. Contact information for your local NRCD is on page 105.

<https://www.rd.usda.gov/programs-services/business-programs/meat-and-poultry-processing-expansion-program>



# Rural Development Value-Added Producer Grant

The USDA Rural Development Value-Added Producer Grant (VAPG) program helps agricultural producers enter into value-added activities related to the processing and marketing of new products. The goals of this program are to generate new products, create and expand marketing opportunities, and increase producer income.

## Eligibility

Independent producers, agricultural producer groups, farmer- or rancher-cooperatives, and majority-controlled producer-based business ventures, as defined in the [program regulation](#), are eligible to apply for this program.

Grant and matching funds can be used for planning activities or for working capital expenses related to producing and marketing a value-added agricultural product. Examples of planning activities include conducting feasibility studies and developing business plans for processing and marketing the proposed value-added product. Examples of working capital expenses include:

- Processing costs
- Marketing and advertising expenses
- Some inventory and salary expenses

Includes  
Maple  
Producers

## Contacts

<https://www.rd.usda.gov/programs-services/business-programs/value-added-producer-grants>

Elijah Massey

Business Programs Specialist  
87 State Street, Suite 324 (05602)  
P.O. Box 249

Montpelier, VT 05601

Phone: (802) 828-6081

Fax: (855) 794-3680

[Elijah.Massey@usda.gov](mailto:Elijah.Massey@usda.gov)

Serving Vermont and New Hampshire

## Assistance

2022 Applications were due in May and offered:

Planning Grants:

\$75,000

Working Capital Grants:

\$250,000 with match required. Please refer to the website for 2023 updates

## Natural Resources Conservation Service (NRCS) Conservation Innovation Grant (CIG)

Conservation Innovation Grants are competitive grants that stimulate the development and adoption of innovative conservation approaches and technologies while leveraging Federal investment in environmental enhancement and protection, in conjunction with agricultural production. Under CIG, Environmental Quality Incentives Program (EQIP) funds are used to award competitive grants to non-Federal entities. CIG enables NRCS to work with other public and private entities to accelerate technology transfer and adoption of promising technologies and approaches to address some of the nation's most pressing natural resource concerns. CIG will benefit agricultural producers by providing more options for environmental enhancement and compliance with Federal, State, and local regulations. NRCS administers the CIG program which requires a 50-50 match between the agency and the applicant. CIG is offered as both a nationwide and a state program. The CIG National Component offers eligible entities the opportunity to apply for grants. The CIG State Component offers eligible entities the opportunity to apply for grants up to \$175,000. This competition is limited to single and multi-year projects, not to exceed 3 years, for projects with a direct nexus to the state of Vermont. Applicants can apply to the National program, the State program, or both. Applicants may apply year-round.

Projects or activities under CIG must:

- Comply with all applicable federal, tribal, state, and local laws and regulations throughout the duration of the project; and use a technology or approach that was studied sufficiently to indicate a high probability for success;
- Demonstrate, evaluate, and verify the effectiveness, utility, affordability, and usability of natural resource conservation technologies and approaches in the field;
- Adapt and transfer conservation technologies, management, practices, systems, approaches, and incentive systems to improve performance and encourage adoption;
- Introduce proven conservation technologies and approaches to a geographic area or agricultural sector where that technology or approach is not currently in use.

Technologies and approaches that are eligible for funding in a project's geographic area using an EQIP contract for an established conservation practice standard are ineligible for CIG funding, except where the use of those technologies and approaches demonstrates clear innovation. Farms interested in research may want to explore partnering with a business or university. The Table of Contents of this guide contains Directories for organizations.

For the FY 2022 CIG award process, at least 10 percent of the total funds available for CIG are set aside for proposals from historically underserved producers, veteran farmers or ranchers, or community-based organizations comprised of or representing these entities. The regulatory definitions of a historically underserved producer and a veteran farmer or rancher may be found at 7 CFR 1466.3.

Learn more about the Program: <https://www.nrcs.usda.gov/wps/portal/nrcs/main/national/programs/financial/cig/>

# The University of Vermont (UVM) Extension

## Farm Viability

Our Farm Viability program provides farm owners with business education resources, skills development, and one-on-one planning services.

### One-On-One Business Planning

Get help from a business provider for a variety of business models, including:

- Full Business Plan: Develop a comprehensive business plan that covers all aspects of the business for 1-3 years. Includes short-and long-term goals, marketing plans, management plans, risk analysis and financial statements.
- Cash Flow Plan: Develop budgets and update the financial statements needed to make key decisions or apply for financing
- Enterprise Analysis Plan: Single-out and analyze one enterprise within your business or test the feasibility of a new idea
- Transition Plan: Develop a plan to phase out of one ag product and begin or expand production of another. Could include enterprise analysis, goal setting, cash flow analysis, etc.
- Transfer Plan: Planning focused on the unique relational, tax, and legal considerations of transferring ownership and management of the farm.

\*Farms must meet VHCB eligibility to participate, meaning the participant is a Vermont resident, has 3 years of experience working in and managing farm operations and the farm business generated at least \$15,000 of gross sales in the previous year.\*

### Pre-Viability One-on-One Business Planning

For individuals not meeting the experience and income requirements outlines above, services are still available, including:

- Budget assistance and preparation
- Business entity guidance
- Help navigating legal, technical and regulatory requirements
- Goal setting and financial planning

### Business Clinics

Short, one-on-one meetings planned for a specific purpose such as a check-up to review progress with a business plan, a brief cash flow analysis or budget review, preparation for a loan application, or a job-level cost analysis. Find out more & register at: [www.uvm.edu/extension/agriculture/agbizcoaching](http://www.uvm.edu/extension/agriculture/agbizcoaching)

### Contact

Betsy Miller, Farm Business Educator; Farm Viability Program Manager  
1-800-287-1552 ext 252  
[Betsy.Miller@uvm.edu](mailto:Betsy.Miller@uvm.edu)

# The University of Vermont (UVM) Extension Northeast Direct Vegetable Benchmark

UVM Extension has partnered with the University of New Hampshire Extension and four additional Northeast states to pilot a new financial benchmarking program for produce farm owners that direct market their crops. The project provides financial statement preparation and financial analysis assistance to eligible farm owners.

## Overview

This project is geared toward the owners of farm businesses that rely on the farm for significant portion of owner household income. In the first year participants will meet three to four times with a business educator to organize accounting records, establish required record keeping systems and integrate farm accounting records with the Finpack® farm financial software program. Participants and educators will meet one to three times in the second year to compile a second round of financial statements and discuss the financial planning goals for the business.

## Eligibility

- Primarily engaged in vegetable and/or fruit production
- Annual gross sales of \$150,000 or higher
- Over half of sales or crop volume is sold through direct market channels-farm retail, CSA, online sales, farmers markets and direct wholesale buyers where farm self-delivers (restaurant, grocers, caterers)

## Sign Up

Fill out the online form at: <https://www.uvm.edu/sites/default/files/Agriculture/agbusiness/NE-Veg-Benchmark-Program-Info-Sheet.pdf>

or send a letter of interest including your name, business name, email, phone, postal address and street address (if different) and years in business to:

UVM Extension  
Attn: NE Direct Benchmark Project  
327 US Route 302, Berlin, VT 05651

or email to Mark Cannella  
[Mark.Cannella@uvm.edu](mailto:Mark.Cannella@uvm.edu)  
(802) 476-2003



Mark Cannella  
[Mark.Cannella@uvm.edu](mailto:Mark.Cannella@uvm.edu)  
(802) 476-2003

# The University of Vermont (UVM) Extension

## Water Quality Business Analysis

UVM Extension farm business educators are available to work with dairy and livestock farm owners to assess and plan for business changes to meet water quality goals. Farm owners can work one-on-one with a business educator to evaluate the feasibility and impact of changes facing the farm and business.

### Strategic Planning

- Analysis of current business cash flow and budget
- Infrastructure improvements
- Farm transfer or exit planning

### Integrating Conservation and Business Planning

- ▽ Assessing the adoption of new practices and new investments
- ▽ Coordination of water quality project advisors
- ▽ Grant and loan application guidance
- ▽ Making the necessary referrals to other in-depth business planning resources

### Sign Up

View the Online Form:

<https://www.uvm.edu/sites/default/files/Agriculture/agbusiness/Water-Quality-Program-Info-Sheet.pdf>

Or send a letter of interest describing your goals for joining the program. Please include: Owner Name, Name of Business, Phone, E-Mail, Address, Mailing Address, Acres Owned, Acres Rented

Mail to:

UVM Extension

Attn: Water Quality Business Analysis

278 South Main Street, Suite 2

St. Albans, VT 05478-1866

E-Mail to:

Tony.Kitsos@uvm.edu



Tony Kitsos

Tony.Kitsos@uvm.edu

(802) 476-2003

## Vermont Agency of Agriculture, Food & Markets (VAAFMM) Community Supported Agriculture Grant

The goal of this competitive grant program is to help early childhood providers and after-school programs incorporate more local food into their operations. Successful applicants will be awarded a grant to subsidize 80 percent of the cost of a community supported agriculture (CSA) share, or farm share, from the Vermont farm of their choice. Grants of up to \$1,000 are available. As a reimbursement grant, successful applicants will be required to purchase their CSA or farm share(s) prior to receiving their grant funds.

### Eligibility

Previous CSA Grant recipients should note that the majority of funds for the 2022 round will be prioritized for applicants who did not receive this grant in the previous year. The following entities are eligible to apply for this competitive grant:

- Vermont registered or licensed early childcare providers
- Vermont licensed after school programs
- 21st Century Child Learning Center Programs

Applications will open in January of 2023

Trevor Lowell, Farm to Institution Program Manager, Vermont Agency of Agriculture, Food & Markets  
116 State St., Montpelier Vermont 05602-2901  
(802) 585-9186 (Call or Text)  
[https://agriculture.vermont.gov/businessdevelopment/farm-school-early-childhood-and-institutions/  
community-supported-agriculture](https://agriculture.vermont.gov/businessdevelopment/farm-school-early-childhood-and-institutions/community-supported-agriculture)

# Vermont Agency of Agriculture, Food & Markets (VAAFMM)

## Farm First

We are a public, not-for-profit program jointly sponsored by the Vermont Agency of Agriculture and the Vermont Agency of Human Services' Invest EAP Centers for Wellbeing. Our staff include friendly and caring licensed counselors and an agricultural resource navigator, all with an interest or experience in agriculture. We can assist you remotely through videoconferencing and in person -- oftentimes right at your farm.

### What is Farm First?

Farm First provides confidential help with any personal or work-related issue. We know that if left unaddressed, stress correlates with chronic health, safety, family and business problems. Consulting with a Farm First counselor or resource specialist, located statewide, can help you resolve problems before they mushroom into debilitating situations. Farm First is here to provide you, your family and your operation with the resources, professional and personal support to address a wide range of issues, including labor and management issues, financial concerns, alcohol or drug problems, injury, illness or adaptive equipment needs, legal issues, family stress, depression and much more.

### Eligibility

Vermont farm owner, or farm-based family member of owner, grossing a minimum of \$10,000. per year from agriculture. Farmers working with a disability or injury are also eligible.

With a single phone call, you can reach Farm First's fully licensed, agriculturally sensitive resource specialists and counselors. We will discuss with you, confidentially and at no cost, the best method to address and resolve your concerns.

### Contact

Call: (802) 318-5538 during daytime work hours

Call: 877-493-6216 outside of daytime work hours

Email: Karen Crowley at [karenc@farmfirst.org](mailto:karenc@farmfirst.org)

[www.FarmFirst.org](http://www.FarmFirst.org)

# Vermont Agency of Agriculture, Food & Markets (VAAFMM)

## Farm to School and Early Childhood Grant

The purpose of this grant is to help schools and early childhood education (ECE) organizations develop programs that will sustain relationships with local farmers and producers, enrich the educational experience of students, improve the health of Vermont children, and enhance Vermont's agricultural economy.

Schools and ECE providers are best able to achieve these goals when they take a holistic approach and incorporate the 3 C's of Farm to School: Cafeteria (food program), Classroom, and Community. Together, the 3 C's support healthy children, healthy agriculture, and healthy communities.

This is a competitive grant program that is offered annually.  
The program opens for applications in the fall.

### Eligibility

The following entities are eligible to apply:

- Vermont registered or licensed early child care providers, or a consortium of early care providers
- Independent schools participating in any federal nutrition programs
- Individual public schools
- Supervisory unions or educational districts on behalf of a public school or consortium of schools

### Contact

Trevor Lowell, Farm to Institution Program Manager, Vermont Agency of Agriculture, Food & Markets  
116 State St., Montpelier Vermont 05602-2901  
(802) 585-9186 (Call or Text)  
<https://agriculture.vermont.gov/grants/childnutrition>



# Vermont Agency of Agriculture, Food & Markets (VAAFM) Farm to School Vision Grant

Farm to school is a broad term. It describes a variety of efforts aimed at educating and engaging children and young adults on the connections that exist between agriculture, nutrition, community and health. This competitive funding opportunity is designed to support projects that engage youth in exploring those connections. We are seeking proposals that address specific challenges related to the interconnections between agriculture, nutrition, community and health.

## Program

This is a two-year grant with a maximum award of \$16,000. Successful applicants will be required to provide a match equal to twenty-five percent of the total grant award. Matching funds can be in the form of cash, in-kind services or a combination of both. Cash match is not a requirement, but proposals that leverage additional funding will receive preference over those that meet the match requirement through in-kind services alone.

Applicants will be required, through qualitative and/or quantitative evidence, to identify a farm to school related challenge impacting their community. Applicants will then need to demonstrate how their proposal seeks to address that challenge. Proposals must center youth in their scope. Strong proposals will: Clearly articulate the problem they seek to address, engage multiple community stakeholders, demonstrate a high likelihood of success, demonstrate an ability for the project to be easily scaled and/or replicated, and demonstrate the likelihood of continued impact beyond the grant period.

## Eligibility

Vermont schools, licensed and/or registered childcare providers and licensed after-school programs are eligible to apply for this grant. Both individual organizations, as well as consortiums are eligible to apply. Non-profits or community organizations that conduct programming in Vermont are also eligible, but must apply as a co-applicant with an eligible school, childcare, or after-school program.

## Contact

Trevor Lowell  
Farm to Institution Program Manager,  
Vermont Agency of Agriculture, Food  
& Markets  
116 State St., Montpelier Vermont  
05602-2901  
(802) 585-9186 (Call or Text)

<https://agriculture.vermont.gov/grants/childnutrition>

# Vermont Agency of Agriculture, Food & Markets (VAAFAM)

## Local Food Market Development Grant

The purpose of this grant is to foster Vermont producers' access to wholesale markets and to increase the quantity of local food available in Vermont institutions and other Vermont wholesale markets by addressing barriers in the supply chain. This program encourages local food wholesale market development opportunities with an institutional focus across the state from Vermont farmers, producer groups, and value-chain facilitators. Proposed projects must improve quality, efficiency, or food safety; address distribution challenges; or mitigate the financial risks associated with scaling up to meet new market demands.

### Program

Proposals addressing market access in Vermont institutions, defined as colleges and universities, early childcare and pre-k-12 schools, hospitals, nursing homes, and correctional facilities, and wholesale market access, including grocery stores, independent retail, and food co-ops, will be considered. Grants will be distributed through a competitive application review process to agricultural producers, producer groups, and value-chain facilitators. To qualify for funding consideration, applicants must either be a Vermont producer or producer group in pursuit of institutional or in-state wholesale market development, or a value-chain facilitator that will directly support Vermont producers' access to institutional or wholesale market expansion in Vermont.

Grants ranging from \$2,000-\$15,000 will be targeted towards:

- Infrastructure Developments: On-farm capital improvements, equipment purchases
- Technology: Accounting, tracking, and/or sales software, website, or app development
- Market Access and Development: innovative solutions to logistics and/or distribution

### Assistance



Applications for 2022 are closed, and may re-open in Spring of 2023



Grants ranging from \$2,000-\$15,000

### Contact

Trevor Lowell  
Farm to Institution Program Manager, Vermont Agency of  
Agriculture, Food & Markets  
116 State St., Montpelier Vermont 05602-2901  
(802) 585-9186 (Call or Text)  
<https://agriculture.vermont.gov/local-food-market-development-grants>

# Vermont Agency of Agriculture, Food & Markets (VAAFMM)

## Vermont Specialty Crop Block Grant

The U.S. Department of Agriculture's Agricultural Marketing Service (USDA AMS) awards Specialty Crop Block Grants to the 50 States, the District of Columbia, and U.S. Territories. In Vermont, the Agency of Agriculture, Food & Markets (VAAFMM) administers these funds to enhance the competitiveness of Vermont and regionally grown specialty crops. Specialty crops are defined as fruits, vegetables, tree nuts, horticulture crops (including honey, hops, maple syrup and mushrooms), and nursery crops (including Christmas trees and floriculture).

### Assistance



Deadline January - February  
Check website for 2023



No minimum or maximum,  
the average is between  
\$7,000 and \$50,000

<https://agriculture.vermont.gov/grants/specialtycrop>

### Practices

- On-farm research (in coordination with university/research staff)
- Establishing or strengthening producer collaboration
- Addressing challenges facing multiple producers
- Projects must make measurable improvements in several specialty crop businesses
- Projects cannot help farmers improve their own business

### Eligibility

- Project must benefit more than one business, organization, or individual.
- Project must describe how to project will have benefits outside of the applicant's organization.
- Allowable/eligible costs are included in the Request for Applications
- Farms that are applying for funding for on-farm research should partner with university research and extension professionals on their proposals

### Program Purpose

- Leveraging efforts to market and promote specialty crops
- Assisting producers with research and development relevant to specialty crops
- Expanding availability and access to specialty crops
- Addressing local, regional, and national challenges confronting specialty crop producers
- USDA AMS supports projects that address the needs of U.S. specialty crop growers and strengthen local and regional food systems.



Apply in Webgrants

<https://agriculturegrants.vermont.gov/index.do>



Gina Clithero

[AGR.SpecialtyCrops@vermont.gov](mailto:AGR.SpecialtyCrops@vermont.gov)

(802) 585- 6225

# Vermont Agency of Agriculture, Food & Markets Trade Show Assistance Grant

Includes  
Maple  
Producers

The Vermont Agency of Agriculture, Food & Markets' Trade Show Assistance Grants provide Vermont agricultural and forestry businesses with funds to identify, plan, exhibit, and sell their Vermont products at out-of-state trade shows or virtual shows targeting out-of-state buyers. These matching grants can mitigate the financial risks associated with exhibiting at trade shows, which provide excellent opportunities to network with wholesale buyers. Applicants may include up to five trade shows in their yearly marketing plan, requesting a total of between \$2,000 and \$5,000 in eligible reimbursements. Businesses may not apply for funding to support attendance at trade shows they have already attended five or more times.

## Assistance



Application Period:  
December-January



Minimum \$2,000  
Maximum \$5,000  
50% match required

## Practices

- 50% reimbursement for out-of-state trade shows targeting wholesale buyers
- Covers travel expenses, marketing assets, booth design, registration fees, booth fees, furnishings, utilities, shipping/freight, printing, samples
- Yearly trade show marketing plan may include up to five shows

## Eligibility

Vermont-based agricultural and forestry businesses that meet the following criteria are eligible to receive funds through this grant:

- Business is registered with the Vermont Secretary of State and has been in business for over one year
- Business or its headquarters are located within Vermont
- Business has three or more wholesale accounts
- Business' products meet the Vermont Local Definition as defined in Act 129

## Contact

Kristen Brassard  
kristen.brassard@vermont.gov  
(802) 522-3742

<https://agriculture.vermont.gov/grants/tradeshows>

# Vermont Agency of Agriculture, Food & Markets

## Working Lands Enterprise Initiative

Includes  
Maple  
Producers

**Purpose and Legislation:** The working landscape forms the backbone of Vermont's heritage and economic viability. The "working landscape" consists of agriculture, food system, forestry, and forest products based businesses. Approximately 20 percent of Vermont's land is used for agricultural purposes and 75 percent as forestry. In 2009, the Council on the Future of Vermont published *Imagining Vermont: Values and Vision for the Future*. This report presents the results of a multi-year effort to poll Vermonters on their visions for the future of the state. One critical area stood out: over 97 percent of Vermonters said they value the working landscape. The 2012 legislative session brought a renewed commitment to Vermonters' values by passing The Working Lands Enterprise Initiative, Act 142. This legislation created the Working Lands Enterprise Fund (WLEF) and the Working Lands Enterprise Board (WLEB) in 2012. The Working Lands Enterprise Initiative (WLEI) manages and invests roughly \$1 million annually into agricultural and forestry-based businesses, depending on the appropriation for the program.

**Program Leadership:** The WLEB is made up of 20 private sector members throughout the supply chains of agriculture and forestry, and staff from the Vermont Agency of Agriculture, Vermont Department of Forests, Parks & Recreation, Vermont Agency of Commerce and Community Development, Vermont Housing & Conservation Board, Vermont Economic Development Authority, and Vermont Sustainable Jobs Fund. In 2015, amendments to legislation added a policy role to the Board.

### Overview

The Working Lands Enterprise Initiative (WLEI) offers funding opportunities to a variety of business structures encompassing forest, farm, and food enterprises. These include producer associations, farms, food cooperatives, business assistance provider organizations and more. The amount of funds available is determined each year through the state's annual budget cycle. See *The Working Lands Funding Opportunity Cycle Calendar*.

**Working Lands Funding Opportunities:** Standard Business Grants; Meat Slaughter and Processing Grants; Supply Chain Impact Grants; Market Level Infrastructure Impact Grants; Producer Association Grants; Service Provider Grants; Service Provider Contracts; Trade Show Assistance Grants

**General Business and Applicant Resources:** Goals, Performance Measures, and Outcomes; Business Plan Template; FAQ - Act 250 and applying for Working Lands Funds

### Contact

Working.Lands@vermont.gov  
(802) 917-2637

<https://workinglands.vermont.gov>

Working Lands Enterprise  
Initiative

94 Harvest Lane,  
Williston, VT 05495

# Natural Resources Conservation Service (NRCS) Agricultural Management Assistance Program (AMA)

The Agricultural Management Assistance Program (AMA) helps agricultural producers use conservation to manage risk and address natural resource issues through natural resources conservation. NRCS administers the AMA conservation provisions, while the Agricultural Marketing Service and the Risk Management Agency implement other provisions under AMA.

## Ranking

For 2022, Vermont's AMA priorities include high tunnels and irrigation practices.

## Assistance



Apply by December 31st (Confirm with Your Local Field Office)



Up to 75 cost-share, with a funding cap at \$50,000 per year



To Apply, Contact Your Local NRCS Field Office. You can find your field office on page 104 or at the following website:  
<https://offices.sc.egov.usda.gov/locator/app?agency=nrcs>

## Eligibility

- Be an agricultural producer
- Have an interest in the farming operation associated with the land being offered for AMA
- Have control of the land for the term of the proposed contract
- Be in compliance with the provisions for protecting the interests of tenants and sharecroppers, including the provisions for sharing AMA payments on a fair and equitable basis within appropriate payment limitation requirements

View the NRCS Agricultural Management Assistance Website

<https://www.nrcs.usda.gov/wps/portal/nrcs/main/national/programs/financial/ama/>

Find your local NRCS Field Office

<https://offices.sc.egov.usda.gov/locator/app?agency=nrcs>

or page 104 for a directory of NRCS Field Offices

USDA NRCS VT State Office

356 Mountain View Drive, Suite 105

Colchester, Vermont 05446

Phone: (802) 951-6796

Fax: (855) 794-3677

# Natural Resources Conservation Service (NRCS) Conservation Stewardship Program (CSP)

Whether you are looking to improve grazing conditions, increase crop resiliency, or develop wildlife habitat, NRCS can custom design a CSP plan to help you meet those goals. NRCS can help you identify natural resource problems in your operation and provide technical and financial assistance to solve those problems or attain higher stewardship levels in an environmentally beneficial and cost-effective manner. For example, NRCS can look at ways to address the amount of soil lost; mitigate the impact of excess water; reduce the contribution of agricultural operations to airborne soil particles and greenhouse gas emissions; improve the cover, food, and water available for domestic and wildlife species; or promote energy efficiencies for on-farm activities.



Apply Year-Round



Technical and  
Financial Assistance



Apply at your local  
NRCS Office

## Grasslands Conservation Initiative

This new initiative assists producers in protecting grazing land uses; conserving and improving soil, water and wildlife resources; and achieving related conservation values by conserving eligible land through grassland conservation contracts. Eligible lands are limited to cropland for which base acres have been maintained under FSA's ARC/PLC and were planted to grass or pasture, including idle or fallow, during a specific period. Enrolled acreage must be managed consistently with a grassland conservation plan. Producers will have a single opportunity to enroll eligible land in a five-year contract.

## Comprehensive Conservation Plan

The 2018 Farm Bill includes a new conservation activity for producers to develop a comprehensive conservation plan (CCP) as part of their CSP contract. A CCP is a conservation plan that meets or exceeds the stewardship threshold for each priority resource concern identified by NRCS across all land uses included in the operation. NRCS will administer CCPs similar to the conservation activity plans (CAPs) under the Environmental Quality Incentives Program (EQIP) and require producers to use a technical service provider (TSP) to develop the plan. NRCS may provide a minimum annual payment of \$1,500 in any year the total contract amount is below a rate NRCS determines equitable based upon the effort required by a participant to meet contract requirements.

## Enhancements & Bundles

Through CSP, producers have the opportunity to further improve their conservation efforts with conservation activities called "enhancements." Enhancements allow a producer to address additional levels of conservation beyond what the minimum conservation practice standard requires. Select from about 140 enhancements to address resource concerns. Some enhancements work together to provide increased conservation benefits when they are implemented as a group. Producers may consider adopting these enhancement groups or "bundles" on their operation. Bundles receive a higher level of financial assistance to encourage the holistic approach to generate additional conservation benefits.

# Vermont Agency of Agriculture, Food & Markets (VAAFAM)

## Farm Agronomic Practices (FAP) Program

The Farm Agronomic Practices (FAP) Program utilizes state funding to help Vermont farms implement soil-based agronomic practices that improve soil quality, increase crop production, and reduce erosion and agricultural waste discharges. The FAP program also provides education and instructional activity grants to support outreach regarding the impacts of agricultural practices on water quality and current state agricultural water quality regulations.



### Cropping



Up to \$8,000 per farm per year

Cover Crop: \$30 per acre (broadcast or interseed) by October 01st. \$45 per acre (drilled) by October 15th. Must be seeded at highest recommended rate.

Crop to Hay: \$35 per acre, or \$45 per acre with nurse crop. 1-time payment for perennial species only. Nurse crops must be at the highest recommended rate.

No Till: \$15 per acre. Cover crop must be drilled. 30% of soil surface must be covered immediately following cover crop planting. No burning of previous crop is allowed. No full-width soil disturbance between crop harvests. No harrowing, chisel plowing, cultivating, tandem disking, or vertical tillage.

No-till Hayland Renovation: \$20 per acre. No-till drill only. Seeding rate must provide full coverage.

Manure Injection: \$25 per acre. Subsurface injection. No aeration. Must follow RAPs. Can include disk, shank, grassland injection below soil surface with a single implement.

### Rotational Grazing



Up to \$8,000 per farm per year

Rotational Grazing: \$30 per acre. Must be rotated at least 2x week and excluded from surface water. 3" of vegetation must be maintained.

No-till Pasture Renovation: \$20 per acre. No-till drill only. Seeding rate must provide full coverage.



### Application Deadlines

- June 15 for Rotational Grazing
- August 1 for Cover Cropping
- 30 days prior to practice implementation for all other practices.

Please submit one application for all practices planned from July 1, until June 30 of the following year.

Manure injection applications, no-till planting, crop to hay planting and no-till pasture and hayland applications accepted relatively year-round, including the spring.



Apply Online

[agriculture.vermont.gov/fap](https://agriculture.vermont.gov/fap)

(802) 828-2430

[AGR.Helpdesk@vermont.gov](mailto:AGR.Helpdesk@vermont.gov)





# Vermont Agency of Agriculture, Food & Markets (VAAFMM)

## Grassed Waterway & Filter Strip Program (GWFS)

The Grassed Waterway and Filter Strip (GWFS) Program can provide technical and financial assistance to Vermont farmers for in-field agronomic best practices to address critical source areas, erosion, and surface runoff. The Program's goal is to reduce soil erosion and improve soil and water quality on cropland that contributes a disproportionately high level of nutrients in runoff. Such areas of cropland are considered "Critical Source Areas" (CSAs), representing a small proportion of the landscape yet a high proportion of nonpoint source pollution loads.

### Assistance



Apply Year-Round



Implementation incentive of \$500 per acre & cost-share up to 90% of installation cost



Eligibility:

- Annual cropping history within 5 years
- Land is adjacent to surface waters and/or ditches
- Operator must have ownership or control of the land for the term of the agreement

### Practices

- Establishment of perennial grassed waterway
- Filter strip establishment
- Critical source field area seeding
- Associated infrastructure (erosion or grade control structures)

### Definitions

**Grassed Waterway:** A shaped or graded channel that is established with suitable vegetation to convey surface water at a non-erosive velocity using a broad and shallow cross section to a stable outlet.

**Filter Strip:** A strip or area of herbaceous vegetation that removes contaminants from overland flow.

**Critical Area Planting:** Establishing permanent vegetation on sites that have, or are expected to have, high erosion rates, and on sites that have physical, chemical, or biological conditions that prevent the establishment of vegetation with normal seeding/planting methods.

How long is the agreement?

10 Years

Can I harvest this land?

Yes

Mary Montour, VAAFMM  
(802) 461-6087

Mary.Montour@vermont.gov  
<https://agriculture.vermont.gov/gwfs>

# Vermont Agency of Agriculture, Food & Markets (VAAFMM)

## Pay for Performance

This program will provide performance-based payments to Vermont farmers for reductions in phosphorus (P) losses from their agricultural fields. Reductions represent improvements in farm management from the management assumed in the Lake Champlain Basin Total Maximum Daily Load (LCB TMDL). Enrolled farms will receive payment for annual net reductions from these historic base loading assumptions, above a threshold set by the program. Most current payment programs pay cost-share for practices. The VPFP is unique because it pays for the outcomes of those practices: it recognizes that the conservation of soil and water generates value to the public and directly compensates farms for that value. In this approach, farmers have the flexibility to implement whichever conservation practices they know will work for their own operations each year.



Mid January



Technical and  
Financial Assistance



Apply Online  
[Agriculture.Vermont.gov/VPFP](https://Agriculture.Vermont.gov/VPFP)

### Eligibility

- Be a Farm as defined in the Required Agricultural Practices (RAPs) operating within Vermont Manage crop land, hay land, or pasture
- Farm business is registered with the USDA Farm Service Agency (FSA) and all managed land is mapped and in compliance with federal Highly Erodible Land and Wetland regulations.
- Have an up-to-date Nutrient Management Plan (NMP) that meets the RAPs for their farm size, including recent soil (and in most cases manure) tests.
- If you are not registered with FSA, do not have soil or manure tests, or do not have an up-to-date Nutrient Management Plan that meets the RAPs for your farm size, you must work to obtain meet those requirements PRIOR to application. Your local Conservation District and/or FSA office can help you with this process.

### Practices

- Crop Rotation
- Manure Injection
- Cover Crops
- Buffers
- Grassed Waterways
- No-till and Reduced-till

### Payment

One time data entry into FarmPREP. Planned rate: \$15/acre, max \$4000 If Selected for Program:  
\$100 per pound of phosphorus reduced beyond a 40% reduction threshold up to an annual cap of \$50,000 per farm  
Additional Stewardship Payments for farms with less than 1lb/ acre and 0.5 lb/acre average P loss may also be available.

Vermont Agency of Agriculture, Food & Markets  
116 State Street  
Montpelier, VT 05620-2901  
(802) 828-2430

# Vermont Agency of Agriculture Food and Markets (VAAFM)

## Pesticide Program and Resources

### VAAFM

Professional and homeowner use of pesticides are regulated under the Vermont Regulation for the Control of Pesticides. These regulations cover sales restrictions, proper use, storage, and disposal of pesticides. Product registration, applicator certificates, dealer licenses, and permits may be required for use of certain pesticides

#### Pesticide Applicator Certification

- There are four categories of pesticide applicator certification in Vermont:
  - Private Applicator
  - Commercial Applicator
  - Non-commercial Applicators
  - Government Applicators
- To be certified as a commercial, noncommercial or government applicator, you must take the CORE exam and at least one other category exam.

#### Pesticide Usage Report

- Pesticide Usage is reported annually to the Vermont Agency of Agriculture by certified commercial, non-commercial and government applicators, as required by the Pesticide Regulations.
- The Agency of Agriculture is publishing new annual reports for commercial pesticide usage data. The Agency has taken many steps to create these reports for the public and we hope you find them useful.

### UVM Extension

#### Pesticide Safety Education Program

- The UVM Pesticide Safety Education Program (PSEP) works closely with the Vermont Agency of Agriculture, Food & Markets to provide training and education resources for current and prospective pesticide applicators, ensuring proper and legal use of pesticides that reduces potential risk to human health and the environment.

#### Pesticide Applicator Report

- Extension and Vermont Agency of Agriculture, Food & Markets for Vermont's pesticide applicators. Includes mail-in quizzes for pesticide recertification credits.

#### Link

- [www.uvm.edu/extension/psep](http://www.uvm.edu/extension/psep)

### Contact

Anne.Macmillan@vermont.gov  
802-828-3479

Pesticide Certification & Training and WPS  
Coordinator, VAAFM

<https://agriculture.vermont.gov/public-health-agricultural-resource-management-division/pesticide-programs>

# U.S. Fish & Wildlife Service (FWS) Partners for Fish & Wildlife

Includes  
Maple  
Producers

The Partners for Fish and Wildlife Program provides free technical and financial assistance to landowners, managers, tribes, corporations, schools and nonprofits interested in improving wildlife habitat on their land. Since 1987, we have helped more than 60,000 landowners restore more than 7 million acres of forest, prairie, wetland and stream habitat for wildlife.



Apply Year-Round



Technical & Financial  
Assistance



Contact the Vermont State  
Coordinator

## Process

A biologist will consult with landowners to help them conserve and improve wildlife habitat at no cost through planning, design and supervision of restoration projects. Services also include identification of other funding sources, and offering permitting guidance.

Landowners continue to own and manage their land while they improve conditions for wildlife.

Many Partners for Fish and Wildlife projects take place on working landscapes such as forests, farms and ranches. USFWS focuses on upland forests, wetlands, native prairies, marshes, rivers and streams. Migratory birds as well as endangered, threatened and at-risk species are considered.

## Example Projects

- Livestock exclusion fencing
- Improved aquatic connectivity
- In-stream aquatic habitat
- Streambank stabilization
- Invasive species control
- Native tree and shrub planting
- Wetland restoration/enhancement
- Riparian reforestation

## Contact

### Vermont State Coordinator

Chris E. Smith

11 Lincoln Street, Door 7

Essex Junction, VT 05452

(802) 872-0629 ext. 20

Chris\_E\_Smith@fws.gov

<https://www.fws.gov/program/partners-fish-and-wildlife>

# Department of Environmental Conservation (DEC) Clean Water Initiative Design & Implementation Block Grant

Three active design and implementation block grants provided by Natural Resources Conservation Council (NRCC), Mount Ascutney Regional Commission (MARC) and Watersheds United Vermont (WUV) are available. The funding requirements are the same for all entities, though the application and grant administration process may vary somewhat. All eligible entities can apply through any grant holder and WUV, NRCC and MARC will coordinate on grant rounds, project applications, and remaining funding.

Includes  
Maple  
Producers

## General Information



Appropriate funding available for projects



Contact your local Conservation District, Watershed Organization, or Regional Planning Commission



Applications open at various times throughout the year

Eligible Projects: Engineering design and implementation projects for water quality improvements in a variety of landscaping settings.

## Partners

Natural Resources Conservation Council (NRCC) / Vermont Association of Conservation Districts  
<https://www.vacd.org>; [connect@vacd.org](mailto:connect@vacd.org)

Mount Ascutney Regional Commission (MARC)  
<https://marcvt.org>; (802) 674-9201

Watersheds United Vermont (WUV)  
(802) 585-3569; [info@watershedsunitedvt.org](mailto:info@watershedsunitedvt.org)

Please check the DEC Website throughout the year for updates.

### Vermont Association of Conservation Districts

PO Box 566  
Waitsfield, VT 05673  
[info@vacd.org](mailto:info@vacd.org)  
Jill Arace; [jill.arace@vacd.org](mailto:jill.arace@vacd.org)

# Franklin County Natural Resources Conservation District (FCNRCD)

## Signs of Conservation

Franklin County Natural Resources Conservation District uses simple roadside signs and social media to raise awareness and appreciation for all the ways that farmers in Vermont build soil health, improve water quality, and create other benefits besides the food they grow. Our campaign was founded in Franklin County, but signs are available statewide.



No cost for signs within Franklin County, other counties may vary



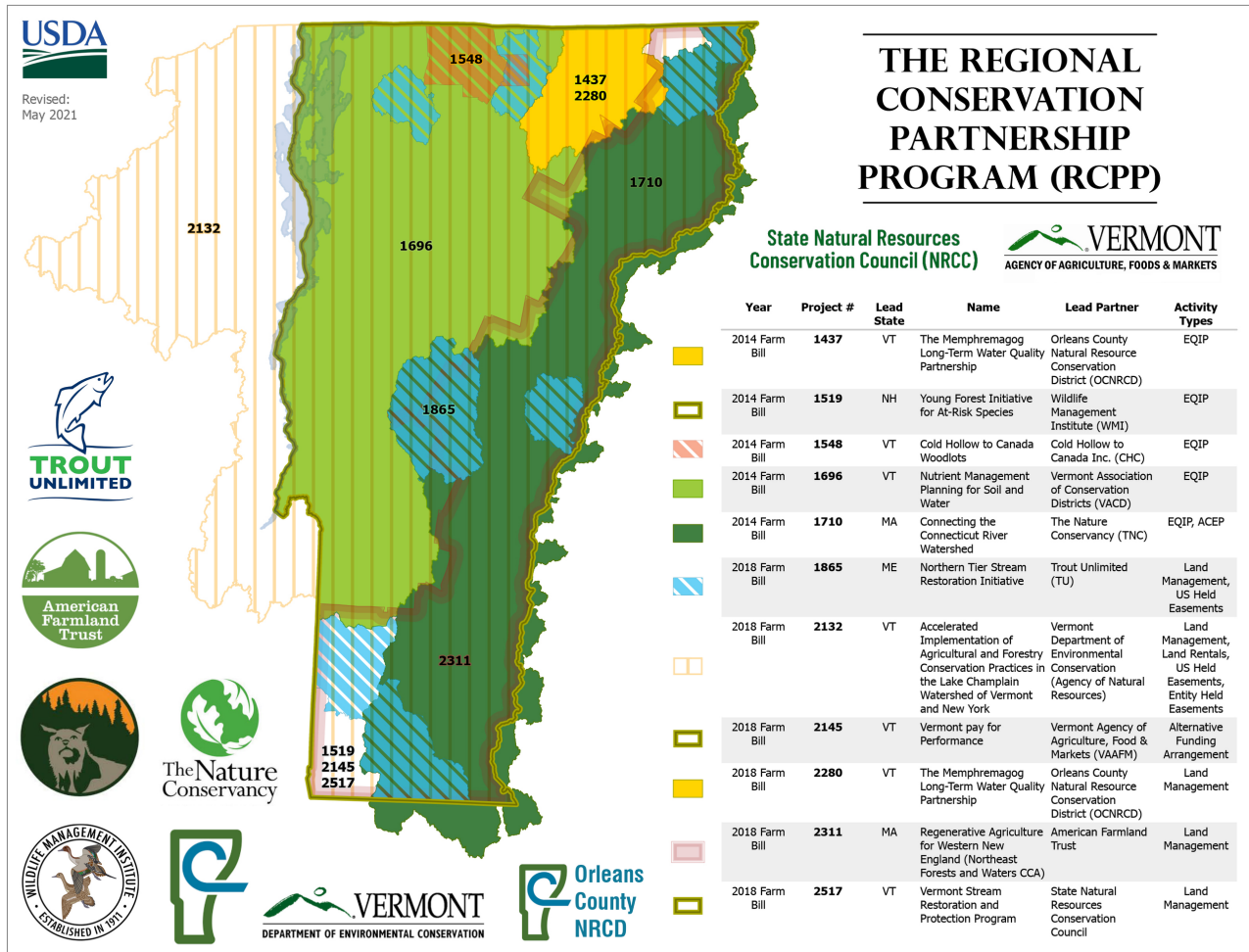
Contact your local Conservation District

Ten signs are available to producers!

Connect with your local Natural Resources Conservation District about assistance with installing and maintaining signs, or to learn more about support for practice implementation. There is a Directory of Natural Resources Conservation Districts at the end of this guide. You can also find a directory at <https://www.vacd.org/>.



# Regional Conservation Partnership Program (RCPP)



The Regional Conservation Partnership Program (RCPP) promotes coordination between NRCS and its partners to deliver conservation assistance to producers and landowners. NRCS provides assistance to producers through partnership agreements and through program contracts or easement agreements.

RCPP combines the authorities of four former conservation programs - the Agricultural Water Enhancement Program, the Chesapeake Bay Watershed Program, the Cooperative Conservation partnership Initiative, and the Great Lakes Basin Program. Assistance is delivered in accordance with the rules of EQIP, CSP, ACEP, and HFRP; and in certain areas the Watershed Operations and Flood Prevention Program.

Contact your local NRCS office or the Lead Partner as listed in the table above. Refer to the Directory of NRCS Field Offices on page 104.

# Regional Organizations

## Tree Plantings

Natural Resources Conservation Districts, as well as Watershed Organizations such as Watersheds United Vermont, have access to funding to implement tree planting projects. Planting trees along stream banks helps reduce erosion, improve water quality, and provide habitat for fish, birds, and other wildlife. Reaching out to Natural Resources Conservation Districts and Watershed Groups directly is the best way to determine how to get trees planted on your land. These organizations can also refer you to other programs and organizations that offer support for your specific tree and shrub planting goals on your land, such as the NRCS and Partners for Fish and Wildlife Program. Each program has different requirements and criteria. A service provider at a Natural Resources Conservation District or Watershed Group can facilitate matching you to the best program for your objectives.

### General Information



Funding will be announced with Request for Applications (RFA)



To Apply, contact your local Conservation District or Watershed Group



In general, applications open in the fall

Conservation Districts help coordinate project scoping and grant applications. They source and procure plant materials, organize and perform installation and maintenance; the grant covers the cost of materials and labor. Land owners may inform Natural Resources Conservation Districts of species preference and be involved in planting and maintenance. Natural Resources Conservation Districts welcome connection with land owners interested in stewardship opportunities any time of year.

### Why install a buffer?



Perennial vegetation provides shade which reduces water temperature and increases oxygen, promoting aquatic life



Provides wildlife and pollinator habitat



Promotes water infiltration, reduces soil loss and fertilizer/amendment runoff



Increases stability of stream banks, improving flood resilience

Find your local Watershed Group  
<https://WatershedsUnitedVT.org>

Find your local Conservation District  
<https://www.vacd.org>



# Natural Resources Conservation District (NRCD) Agricultural Support

Natural Resources Conservation Districts can assist Small Farm Operations, Certified Small Farm Operations, Medium Farm Operations, and Large Farm Operations with Nutrient Management Planning, water-quality related workshop coordination, event hosting, and provide referrals to additional assistance. Capacity for support ranges from one NRCD to another. Please reach out to your local NRCD for additional information. View the Table of Contents for their Directory, or go to <https://www.vacd.org/>

## General Information



Some NRCDs offer  
equipment rentals



Contact your local  
Natural Resources Conservation  
District (NRCD)



Support is  
available year-  
round

### Services May Include:

- Soil Sampling
- Manure Sampling
- Equipment Rentals
- Land Treatment Planning, Nutrient Management Planning, understanding the RAPs
- Program & Technical Assistance Referrals & Support
- Workshop Coordination and Hosting

Small Farm Operations and Certified Small Farm Operations can take UVM Extension's *Digging In – Nutrient Management Course for Farmers* at no-cost when assisted by a NRCD. This course is available in the winter, offers a foundation in best management practices, and provides a strategy for producers to manage all their compliance records while planning for healthy and bountiful crops.

Contact your local NRCD any time of year if you are interested.

Not sure of your farm size? Call your local NRCD or check out  
<https://agriculture.vermont.gov/sfo>

Learn more about the course at: <https://www.uvm.edu/extension/nwcrops/soil-health-and-nutrient-management>

To sign up, contact your local Natural Resources Conservation District.

There is a Directory on page 105.

You can also find your local NRCD on the Vermont Association of Conservation Districts  
Website:

<https://www.vacd.org/>

# Vermont Association of Conservation Districts (VACD) Required Agricultural Practices (RAP) Quiz

The goal of the Required Agricultural Practices (RAP) Online Quiz is to provide an accessible, informative tool for livestock farmers to raise awareness of the RAPs and water quality improvement practices available for Vermont Farmers while providing them with water quality credits.

## What You'll Learn:

- How the Required Agricultural Practices (RAPs) apply to your farm
- Specific on-farm examples
- Impact of management practices on water quality
- Links to additional resources

### Take the RAP Quiz

[www.vacd.org/rapquiz](http://www.vacd.org/rapquiz)

### Farm Size Classifications

[http://agriculture.staging.vermont.gov/sites/agriculture/files/documents/Water\\_Quality/FarmSizeClass.pdf](http://agriculture.staging.vermont.gov/sites/agriculture/files/documents/Water_Quality/FarmSizeClass.pdf)

### RAP Summary

[https://agriculture.vermont.gov/sites/agriculture/files/documents/Water\\_Quality/RAPsummaryPDF.pdf](https://agriculture.vermont.gov/sites/agriculture/files/documents/Water_Quality/RAPsummaryPDF.pdf)

### View the Nutrient Management Standard

Updated November 2021

[https://efotg.sc.egov.usda.gov/api/CPSFile/33662/590\\_VT\\_CPS\\_Nutrient\\_Management\\_2021](https://efotg.sc.egov.usda.gov/api/CPSFile/33662/590_VT_CPS_Nutrient_Management_2021)

### View the Required Agricultural Practices

[https://agriculture.vermont.gov/sites/agriculture/files/documents/RAPFINALRULE12-21-2018\\_WEB.pdf](https://agriculture.vermont.gov/sites/agriculture/files/documents/RAPFINALRULE12-21-2018_WEB.pdf)

### Questions? Need Help?

Reach out to your local Natural Resources Conservation District (NRCD)  
View the Table of Contents for their Directory, or go to  
[www.vacd.org](http://www.vacd.org)

# Northeast Dairy Business Innovation Center (NE-DBIC)

## General Information

The Northeast Dairy Business Innovation Center (NE-DBIC), hosted by the Vermont Agency of Agriculture, Food & Markets, is one of four USDA Dairy Business Innovation Initiatives (DBII) in the nation. The NE-DBIC launched in February of 2020 and serves at ten-state region which includes all New England states, Delaware, New Jersey, New York, and Pennsylvania.

The NE-DBIC provides support to dairy businesses through projects that promote the development, production, marketing, and distribution of dairy products. Projects target dairy farms and processors while providing additional support through market research and technical assistance. The Center's investment and project strategy promotes innovation and resiliency for regional production of dairy products.

To date, \$12.72 million has been awarded to the Vermont-based NE-DBIC for projects extending through 2024. Half of the federal funding awarded for the NE-DBIC is granted to dairy farmers and value-added processors.

Funding for the NE-DBIC was made possible by the U.S. Department of Agriculture's (USDA) Agricultural Marketing Service through grants AM190100XXXXG081, AM200100XXXXG003, and 21DBIVT1004-00. Its contents are solely the responsibility of the authors and do not necessarily represent the official views of the USDA.

To view grants, events, educational opportunities, dairy consumer preferences, dairy market appeal, grazing practices, health and safety projects, supply chain opportunities, and technical assistance and research for dairy farmers and processors, view the website:

<https://agriculture.vermont.gov/dbic>

### Northeast DBIC Staff

Laura Ginsburg, Center Lead

[laura.ginsburg@vermont.gov](mailto:laura.ginsburg@vermont.gov)

(802) 522-2252

Kathryn Donovan, Center Coordinator

[kathryn.donovan@vermont.gov](mailto:kathryn.donovan@vermont.gov)

(802) 585-4571

# Farm Service Agency (FSA) Dairy Margin Coverage Program

DMC continues to offer protection to dairy producers when the difference between the all-milk price and the average feed price (the margin) falls below a certain dollar amount selected by the producer



Apply by  
March 25th



Pay annual coverage fee of \$100  
and receive catastrophic coverage



Apply at  
your local FSA  
Office

At a milk margin minus feed costs of \$9.50 or less, DMC payments are possible depending on the level of coverage chosen by the dairy producer.

- Select a coverage level ranging from \$4.00 to \$9.50 per cwt, in \$0.50 increments
- Select a coverage percentage of the dairy operation's production history ranging from 5 percent to 95 percent, in 5 percent increments
- Producers have the choice to lock in coverage levels until 2023 and receive a 25 percent discount on their DMC premiums.

Find your local FSA Service Center:

<https://offices.sc.egov.usda.gov/locator/app?state=vt&agency=fsa>

View the Program Website:

<https://www.fsa.usda.gov/programs-and-services/dairy-margin-coverage-program/index>

FSA State Office  
356 Mountain View  
Drive Suite 104  
Colchester, VT 05446  
Phone: (802) 658-2803  
Fax: (855) 794-3676

# University of Vermont (UVM) Extension

## Dairy Business & Herd Management Technical Assistance

Technical Assistance is available for Dairies and other Livestock Producers from a network of providers including The University of Vermont, Vermont Dairy Business Innovation Center, Natural Resources Conservation Districts, Vermont Agency of Agriculture, Food & Markets, which includes the Dairy Herd Management Technical Assistance (DHMTA) Program, Pasture and Surface Water Fencing (PSFW) Program, Dairy Grazing Cohorts, and others.

### Opportunities

- Provide support for dairies of all sizes, conventional and organic, and include support for cows as well as sheep and goats
  - Herd management including records analysis, cow comfort, sourcing grant funding, milk quality, improving farm efficiencies
  - Grazing planning
  - Sourcing grant funding
  - Enrolling farms in programs that provide payments for rotational grazing and protecting waterways
- Support for herd health, herd record analysis, calves and heifers, cow comfort, milk quality, farmstead processing, and raw milk sales

### Advisors

Tony Kitsos

Farm Business Educator, Water Quality Business Analysis Program Coordinator, UVM Extension, Saint Albans Office

[Tony.Kitsos@uvm.edu](mailto:Tony.Kitsos@uvm.edu)

1-800-639-2130 ext. 440

Business support for medium and large scale cow dairy operations

Whitney Hull

Dairy Herd Management Educator, UVM Extension, Morrisville Office

[whitney.hull@uvm.edu](mailto:whitney.hull@uvm.edu)

Business support for medium and large scale cow dairy operations

Kelsie Meehan

Dairy Herd Management Educator, Center for Sustainable Agriculture, UVM Extension

[Kelsie.meehan@uvm.edu](mailto:Kelsie.meehan@uvm.edu) (518) 810-6431 Statewide technical assistance for cow, goat, and sheep dairies. Small-to-mid sized producers, including pasture-based and organic dairies.

UVM Extension Dairy Herd Management  
[www.uvm.edu/extension/sustainableagriculture/  
dairy-herd-management-technical-assistance](http://www.uvm.edu/extension/sustainableagriculture/dairy-herd-management-technical-assistance)

See also: UVM Extension Grazing and  
Livestock Program

# Efficiency Vermont Agricultural Loan

Includes  
Maple  
Producers

Secure a flexible, low-interest loan so you can make cost-effective energy improvements to your agricultural operation. Get access to affordable, low-interest loans with \$0 down, so you can improve the energy efficiency of your farm or ag operation, boost production, and lower your operating expenses. We perform a cash-flow analysis of your energy efficiency project, then work with VSECU to structure your loan. Contact us with questions or to get started on our streamlined application process.

## Projects

Give us a call to talk about your energy efficiency project—whether it's upgrading your barn lighting, buying a reverse osmosis system to boost syrup production, or adding variable frequency drives to your farm's milking equipment. After we talk, we'll run a cost-savings analysis to ensure that the proposed improvements strengthen your bottom line. If you decide to move forward, we can guide you through the application process and help you secure financing with terms that work for you.

- Experienced, unbiased advice on cost-effective improvements
- Loan terms structured to meet your cash-flow needs
- Rebates available for qualifying agricultural products

## Eligibility

- Financing must be for energy efficiency improvements
- Agricultural operations and farms must be located in Vermont
- Must be registered and in good standing with the Vermont Office of the Secretary of State



Efficiency Vermont  
20 Winooski Falls Way 5th Floor,  
Winooski, VT 05404  
Monday to Friday  
8 AM to 5 PM  
(888) 921-5990  
<https://www.encyvermont.com>

# Rural Development

## Rural Energy for America Program (REAP)

Includes  
Maple  
Producers

The USDA Rural Development Rural Energy for America (REAP) program provides guaranteed loan financing and grant funding to agricultural producers and rural small businesses for renewable energy systems or to make energy efficiency improvements. Agricultural producers may also apply for new energy efficient equipment and new system loans for agricultural production and processing.

### Example Projects

- Biomass (for example: biodiesel and ethanol, anaerobic digesters, and solid fuels)
- Geothermal for electric generation or direct use.
- Hydropower below 30 megawatts
- Hydrogen
- Small and large wind generation
- Small and large solar generation
- Ocean (tidal, current, thermal) generation

Funds may also be used for the purchase, installation and construction of energy efficiency improvements, such as:

- High efficiency heating, ventilation and air conditioning systems (HVAC)
- Insulation
- Lighting
- Cooling or refrigeration units.
- Doors and windows
- Electric, solar or gravity pumps for sprinkler pivots
- Switching from a diesel to electric irrigation motor.
- Replacement of energy-inefficient equipment

- Loan guarantees on loans up to 75 percent of total eligible project costs.
- Grants for up to 25 percent of total eligible project costs.
- Combined grant and loan guarantee funding up to 75% of total eligible project costs.

### Terms

Renewable Energy System Grants:  
\$2,500 minimum. \$500,000 maximum.

Energy Efficiency Grants:  
\$1,500 minimum. \$250,000 maximum.

Are there additional requirements?

Applicants must provide at least 75 percent of the project cost if applying for a grant only.

Applicants must provide at least 25 percent of the project cost if applying for loan.

All projects must have technical merit and utilize commercially available technology.

Energy efficiency projects require an energy audit or assessment.

Ken Yearman, Vermont Rural Development Energy Coordinator

Kenneth.Yearman@usda.gov (802) 828-6070

<https://www.rd.usda.gov/programs-services/energy-programs/rural-energy-america-program-renewable-energy-systems-energy-efficiency-improvement-guaranteed-loans>

# Vermont Department of Environmental Conservation (DEC)

## Diesel Emissions Reduction Financial Assistance Program

The Vermont Diesel Emissions Reduction Financial Assistance Program was developed to provide technical assistance and incentive funding for projects that reduce diesel emissions from engines, vehicles, and equipment in Vermont with the goals of reducing public exposure to emissions from diesel-powered engines and the associated risks to public health and the environment. The DEC periodically solicits applications from potential project partners for projects that achieve significant reductions in diesel emissions from diesel powered engines, vehicles and equipment operating in Vermont.

### Eligibility

What vehicles and equipment are eligible?

- Diesel-powered engines, vehicles, and equipment currently operating in Vermont. These may include: buses, locomotives, heavy-duty trucks, defined as Class 5 through Class 8; Class 5 (16,001 -19,500 lbs gross vehicle weight rating [GVWR]); Class 6 (19,501 - 26,000 lbs GVWR); Class 7 (26,001 - 33,000 lbs GVWR); Class 8a (33,001 - 60,000 lbs GVWR); Class 8b (60,001 lbs GVWR and over), marine engines, non-road engines, equipment or vehicles used in construction, handling of cargo, agriculture, mining or energy production (stationary generators and pumps).

What projects are eligible?

- Certified vehicle or equipment replacement with all-electric (battery, grid, or fuel cell), alternative fuel, or newer diesel options; certified engine replacements; clean alternative fuel conversions; verified emission control technologies such as exhaust controls, cleaner fuels, and engine upgrades; verified idle reduction technologies such as auxiliary power units, fuel operated heaters, shore connection systems, transport refrigeration unit (TRU) electrified parking spaces, and truck stop electrification technologies; and/or verified aerodynamic technologies and low rolling resistance tires.

Who is eligible to apply?

- All interested local, State and regional agencies or departments as well as businesses, institutions, and nonprofit organizations operating in the State of Vermont.

### Qualifications

There are a number of eligibility and cost share requirements. Cost share requirements vary depending on the project. For example, the program can fund up to 45% of the cost of replacing a heavy-duty diesel truck with a new, zero tailpipe exhaust vehicle (grid, battery, or fuel cell), while up to 25% of the cost of the truck's replacement with a newer, cleaner diesel, hybrid, or alternative fuel vehicle can be funded under this program. For more information, please review the DERA State Program Guide.

### Contact

Leigh Martin  
(802) 261-0713  
leigh.martin@vermont.gov

<https://dec.vermont.gov/air-quality/mobile-sources/diesel-emissions/vt-diesel-grant>



# Vermont Economic Development Authority (VEDA) Agricultural Energy Loan Program

Includes  
Maple  
Producers

The Vermont Economic Development Authority's Agricultural Energy Loan Program (AELP), created through Act 87 in 2013, is administered by the Vermont Agricultural Credit Corporation (VACC). The AELP provides loans to agriculture- or forest product-based companies for renewable energy and energy efficiency projects. The maximum loan amount is \$2,000,000, and the percent of the project funded by VACC is negotiable. Loans are provided at variable rates, although fixed rates may be available in some circumstances; current rates can be found here. Loan terms are determined on a case-by-case basis. Fees associated with CELP loans include (1) a 1% commitment fee (\$5,000 maximum), (2) a \$30 credit report fee, (3) if applicable, appraisal fee, document recording fee, flood certificate fee, and other out-of-pocket fees.

## Eligibility

- A Vermont resident who is engaged in agriculture or forest products businesses within the state and will help expand the agricultural economy of the state
- An operator or proposed operator of an agricultural or forest-based products business
- A current or prospective owner/prospective purchaser or lessee of agricultural land in the state or of depreciable machinery, equipment and/or livestock in Vermont.

## Contact

Vermont Economic Development  
Authority

58 East State Street, Suite 5  
Montpelier, Vermont 05602

Phone: (802) 828-5627

Fax: (802) 828-5474

Email: [info@veda.org](mailto:info@veda.org)

<https://www.veda.org>

# Audubon Vermont Bird Friendly Maple

Includes  
Maple  
Producers

The Bird-Friendly Maple Project is ready to give you and maple-lovers everywhere a way to support and promote sugarbush management that's good for Vermont's birds, forests, and forest-based economy.

The project is building on the national award-winning Foresters for the Birds partnership between Audubon Vermont biologists and Vermont Department of Forests, Parks & Recreation foresters and expanding to include a new partner: leaders from the Vermont maple industry that includes the Vermont Maple Sugar Makers Association.

## General Information

Participating  
Producer  
[vt.audubon.org/maple](http://vt.audubon.org/maple)



A biologist will come visit your sugarbush, perform a survey and evaluation of your stands as they relate to bird diversity and abundance as well as forest health and habitat quality. You will receive a report indicating many aspects of forest health, and where your sugarbush fits in. The Bird Friendly Maple Project can be part of your overall Forest Management Plan and is also a way to support your business marketing endeavors.

Steve Hagenbuch, Audubon Conservation Biologist  
[steve.hagenbuch@audubon.org](mailto:steve.hagenbuch@audubon.org)

Forest Management Plan Resources from the Vermont Agency of Natural Resources Department of Forests- Parks and Recreation

<https://fpr.vermont.gov/forest/managing-your-woodlands/forest-management-plans>

You can also view the Table of Contents to navigate to a Directory of County Foresters in Vermont

Learn more about the NRCS Environmental Quality Incentives Program, which may assist with Forest Management Plans

<https://www.nrcs.usda.gov/wps/portal/nrcs/detail/vt/programs/financial/eqip/?cid=stelprdb1248990>

Find your local NRCS Office

<https://www.nrcs.usda.gov/wps/portal/nrcs/main/vt/contact/local/>

You can also view the Directory of NRCS Offices in Vermont on page 104.

# Vermont Department of Forests, Parks and Recreation

## Resources for Loggers

The State of Vermont's Agency of Natural Resources Department of Forests, Parks and Recreation offers multiple resources for loggers.

### Training

LEAP: Vermont Logger Education to Advance Professionalism

Program Manual for Mechanized Logger Training

Northeast Master Logger Certification Program

### Resources

The AMP Manual & App. The App is available online and offline and

Market Assessments

Management Practices

Wetland Rules and the Silvicultural Allowed Practices

### Rentals

Skidder Bridges

I-Beam Bridges

Truck Bridges

### Contact

Dave Wilcox, Watershed Forester

(802) 793-0265

[David.Wilcox@vermont.gov](mailto:David.Wilcox@vermont.gov)

<https://www.fpr.vermont.gov>

# Vermont Department of Forests, Parks and Recreation

## Forest Legacy Program

The Forest Legacy Program (FLP) is a federal grant program to protect forestlands from conversion to non-forest uses. The Vermont Department of Forests, Parks & Recreation working in conjunction with the USDA Forest Service is the State Lead Agency for Vermont's Forest Legacy Program. The FLP provides funding to further conservation of important forestland properties. The program is entirely voluntary. Landowners who wish to participate may either sell the property as fee simple title (all rights), or only a portion of the property rights and retain ownership of the land. The use of conservation easements allows the land to remain in private ownership and ensures that important public values such as wildlife habitat, natural areas, forest resources, and outdoor recreation opportunities are protected.

### Overview

The Forest Legacy Program provides for up to 75 percent of the costs of a conservation easement or fee-simple acquisition, including the costs of appraisals, surveys, closing costs, title work and insurance, and other associated costs. The remaining 25 percent must be matched by either the landowner or an assisting entity, such as a non-profit organization or non-federal governmental entity.

### Landowner Responsibilities

Landowners who participate in the Forest Legacy Program will be required to manage their property according to the terms of the resulting conservation easement. As required for the Forest Legacy Program, a management plan or forest stewardship plan must be developed for each property. A management plan encourages long-term stewardship by assisting private landowners with the active management of their natural resources. Plans can be amended periodically to account for changes in landowner objectives, land ownership, or other factors which may not have been apparent originally.

Michael C. Snyder, Commissioner  
1 National Life Drive, Davis 2  
Montpelier, VT 05620-3801  
michael.snyder@vermont.gov

# Vermont Department of Forests, Parks and Recreation

## Use Value Appraisal Program

Vermont's UVA Program enables eligible private landowners who practice long-term forestry or agriculture to have their land appraised based on the property's value of production of wood or food rather than its residential or commercial development value. The Department of Taxes, Division of Property Valuation and Review (PV&R) is the lead agency, but the Division of Forestry with County Foresters help to administer the Forestry Use Value Appraisal portion of the program.

### Eligibility

- Parcels must contain at least 25 acres that will be enrolled and be managed according to a forest plan approved by the Vermont Department of Forests, Parks and Recreation
- For most forestland on productive soils (Site I, II and III), the primary forest management objective must be long-term production of forest products in accordance with established forest practices. Wildlife habitat, aesthetics, recreation, watershed protection, etc. are acceptable objectives when consistent with and complementary to timber management. Significant wildlife habitats, special places and sensitive sites, miscellaneous inclusions of one acre or less, and Ecologically Significant Treatment Areas (ESTAs) may also qualify without timber production.
- Open/idle agricultural land (not eligible for Agriculture Use Value) that is not to be reforested within two years may also be enrolled but cannot exceed 20% of total enrolled qualifying acreage (open/idle ag land plus forested acres on productive soils)
- Site I land: Also called non-productive soils; land having soils incapable of growing a minimum amount of wood. There is no limit on Site IV enrollment.
- Not Eligible:
  - House sites and land under other private or commercial developments
  - A minimum of two acres surrounding dwellings including houses, camps and mobile homes
  - Land used for commercial mining or removal of gravel
  - Other non-conforming uses such as lawns, recreational ponds, cell phone towers, etc
  - Any forested areas where the landowner chooses not to harvest trees, unless enrolled as an ESTA.
  - Any utility right-of-way in excess of two acres and wider than 40 ft
  - Any land where vegetation is not under the legal control of the landowner may not be enrolled

For information regarding enrollment of agricultural land,

Current Use Program

Division of Property Valuation & Review

PO Box 1499

Montpelier, VT 05601-1499

Phone: (802) 828-5860

<https://tax.vermont.gov/property-owners/current-use>

[tax.currentuse@vermont.gov](mailto:tax.currentuse@vermont.gov)

For more information regarding forestland enrollment, please contact your County Forester.

If you have questions about the process, please contact the Department of Forests, Parks and Recreation Current Use Division at (802) 828-5860

## Resources for Trail Stewardship

Landowners who host specific types of recreation trails on their property may qualify for trail corridor management labor from local trail organizations. Organizations such as non-profits, municipalities and governmental entities can apply for funding related to maintenance and construction of public recreational trails, trail linkages, trailhead facilities and parking areas, trail rehabilitation, and easements. If you are interested in installing a trail, or seeking maintenance on a current trail, please reach out to your town conservation commission or Vermont Trails and Greenways Council to find organizations who operate in your area.

The Vermont Trails and Greenways Council (VTGC) is an independent advisory body that works with the Vermont Agency of Forest Parks and Recreation (FPR) to support Vermont Trails and Outdoor Recreation. The Council was founded as a nonprofit made up of a wide range of Vermont trail organizations. Our primary mission is to ensure that people will always have access to the trails and landscape of Vermont. This mission is driven by a commitment to trails as critical infrastructure for Vermont communities in ensuring better health, sustainable economies, and an increased commitment to conservation.

Early in its development, VTGC took on some important statutory responsibilities. The Council formally serves in an advisory capacity for FPR with a focus on three primary advisory roles:

1. Supporting the allocation of federal funds through the Recreational Trails Program of the Federal Highway Department;
2. Overseeing the Vermont Trail System with a focus on making recommendations about membership, trails standards and how to best maintain, build and advocate for trails in Vermont; and
3. Encouraging and supporting educational programs about Vermont trails and outdoor recreation.

The Council is organized around a core Board with outreach to a broader group of trails-related stakeholders throughout the state, including individuals, towns, nonprofits and some for-profit businesses.

The current membership includes organizations responsible for more than 100,000 volunteer hours, over 70% of our public trails, and the infrastructure for outdoor recreation as one of our most important industries, providing more than 50,000 jobs in Vermont.

Vermont Department of Forests, Parks and Recreation  
1 National Life Drive, Davis 2  
Montpelier, VT 05620-3801  
Lands Administration and Recreation: (802) 272-4156

Vermont Trails and Greenways Council  
26 VAST Lane  
Barre, VT 05641  
<https://vermonttgc.org>

# Vermont Invasives Forest Pests

## Emerald Ash Borer (EAB)

The flight season of Emerald Ash Borer is June 1st through September 30th

- Know your ash. Identify them and mark their location. Learn the signs and symptoms of EAB. Develop a response plan with your forester. Learn to identify EAB and report suspicious findings at [www.VTInvasives.org](http://www.VTInvasives.org).
- Consult your forester about protocols regarding relocating ash wood from affected areas. October 1st to May 31st, or the non-flight period, is the best time to conduct forest-related activities on ash.
- Keep firewood local. If you are inside the Infested Area, do not sell ash firewood outside of the Infested Area unless it has been heat treated. If heat treatment or buyers within the Infested Area aren't available, it may be best to leave ash firewood on your property. If you are outside the Infested Area, do not buy ash firewood that came from within the Infested Area unless it has been legitimately heat treated. Talk to your dealer to ensure that the firewood you are buying has been handled according to the Slow the Spread Recommendations and doesn't pose a threat to the ash in uninfested areas.
- A copy of Ash Processing Options to SLOW THE SPREAD of Emerald Ash Borer can be provided to you by the Department of Forests- Parks and Recreation. It is also available at [VTinvasives.org/eab](http://VTinvasives.org/eab)

## Spongy Moth

Hand Removal: Egg masses can be removed from trees between August and May to reduce infestations in forthcoming years. Use a scraper to carefully remove the masses and submerge them into a container with soapy water or alcohol so that they can be destroyed (not onto the ground where they may still hatch).

Chemical Control: Btk (*Bacillus thuringiensis kurstaki*) is a biopesticide can be applied by a registered pesticide application company or by homeowners who have carefully read application instructions. Btk is a product that affects the digestive system of caterpillars and should only be applied between May and early June, when spongy moths are still in the larval stage and are small (1/2 to 3/4 inch). Two spray applications are usually required for effective control. Application of Btk after mid-June is not an effective way to manage this pest.

Trapping: Caterpillars can be trapped using burlap. Start by wrapping an 18-inch wide strip around the tree at chest height. Tie a string around the center and fold the top portion down to form a skirt, with the string acting as a belt. Pick off the caterpillars daily and dispose of them by submerging them into a container with soapy water or alcohol.

### Other invasive species to be aware of and report:

- Ash Yellows
- Asian longhorned beetle
- Balsam wooly adelgid
- Beech bark disease
- Beech leaf disease
- Butternut canker
- Chestnut blight
- Dutch elm disease
- Elongate hemlock scale
- Hemlock wooly adelgid
- Jumping worm
- Oak wilt
- Pear thrips
- Red pine scale
- Sirex woodwasp
- Spotted lanternfly
- Thousand cankers disease
- White pine blister rust
- Winter moth

[www.VTInvasives.org](http://www.VTInvasives.org)

Ginger Nickerson  
Forest Pest Education Coordinator  
UVM Extension  
(802) 476-2003  
[ginger.nickerson@uvm.edu](mailto:ginger.nickerson@uvm.edu)

# The University of Vermont (UVM) Extension

## Forest Business Education & Planning Assistance

Our Forest Business program is funded by The UVM Extension and the Vermont Housing & Conservation Board and provides businesses in Vermont's forest product sector with management resources, skills development, and one-on-one planning services. We aim to support the development of a sustainable forest economy in the Northeast by working with a diverse set of businesses including loggers, foresters, processors, mills, woodworkers, wood manufacturers, and timber framers.

### One-On-One Business Planning Assistance

Over the course of a year participants can focus on projects including development and implementation of in-depth business plans, honing of finances, enterprise analysis planning, and creation of new marketing plans.

### Business Clinics

Short, one-on-one meetings planned for a specific purpose such as a check-up to review progress with a business plan, a brief cash flow analysis or budget review, preparation for a loan application, or a job-level cost analysis. Find out more & register here: <https://www.uvm.edu/extension/agriculture/agbizcoaching>

### UVM Extension Forest Business Roundtable

After a successful launch in 2021, the Forest Business Roundtable is back. A peer advisory cohort for forest and wood products businesses to share challenges and opportunities, hone business management skills, and develop leadership skills with a varied group of industry peers. 2nd cohort began May 2022 and includes monthly meetings with 10 to 12 business owners and managers including: Timber Harvesters, Mills, Wood Manufacturers, Foresters, Artisans, Value Added Producers, and Maple Businesses, joining an informal board of directors' atmosphere. Participants can explore a variety of business skills and disciplines, learn from industry professionals invited to meetings based on interest of the group, network with operators in the forest economy, develop relationships, and do business.

### Contact

Chris Lindgren, Forest Business Program Manager; 1-800-281-6977 ext 274; [Christopher.Lindgren@uvm.edu](mailto:Christopher.Lindgren@uvm.edu)

Chris provides one-on-one business planning and coaching, as well as business skills workshops and training to Vermont's forest products industry and businesses. He also works with the Maple Business Benchmark project managing data and developing business planning tools and resources. Chris has been working with Extension since 2013 when he collaborated on work with Farm Viability and the Carrot Project. Previously, he worked in small businesses for 25 years, focusing on finance and production management. He also has specific experience in sawmills, wood products manufacturing and timber framing. Chris grew up in Vermont, built a post and beam home on his family's land and operates a small sugaring operation with his family. In his spare time he enjoys exploring the mountains and valleys of Vermont with his family. He holds a B.A. and M.B.A. from Marlboro College, as well as continuing education in accounting.



# The University of Vermont (UVM) Extension Maple Resources

The UVM Extension Maple Program supports maple producers by providing research-based educational solutions for maintaining sustainable operations with above-average yields of high quality syrup.

## Vermont Maple Minute

The Vermont Maple Minute is a podcast hosted by Mark Isselhardt, University of Vermont Maple Specialist, Proctor Maple Research Center. Listen to the podcast at:

<https://www.uvm.edu/extension/agriculture/vermont-maple-minute-1>

## Maple Career Education

Learn about career development events for students at:

<https://www.uvm.edu/extension/agriculture/maple-career-education>

## Maple Conference Recordings and Materials

Watch, listen to, and read materials related to past Maple Conferences:

[https://www.uvm.edu/extension/agriculture/maple\\_conference](https://www.uvm.edu/extension/agriculture/maple_conference)

## Annual Maple Statistics

See the statistics from the North American Syrup Council, Canadian Maple Industry and National Agricultural Statistics Service (NASS) at <https://www.uvm.edu/extension/agriculture/maple-statistics>.

## Maple Regulations

Stay up-to-date on USDA Grade Standards, Canadian Regulations, Vermont Regulations, Vermont Laws and Inspection Procedures at: <https://www.uvm.edu/extension/agriculture/maple-regulations>

## Business Resources

Find resources related to annual production and yield forecast, multi-year production yield, pricing and sales forecast, rental rates, sap pricing and hauling costs at:

<https://www.uvm.edu/extension/agriculture/maple/bizmodules/maple-business-planning-modules>

Special programs include:

- Businesses generating more than 100k in gross sales are eligible for the Maple Benchmark Program which offers a business financial analysis. Sign Up: [go.uvm.edu/maplebench](https://go.uvm.edu/maplebench)
- The Maple Sap Business Promotion Program offers plenty of tools to analyze your current or potential sap business [https://www.uvm.edu/sites/default/files/Agriculture/agbusiness/factsheets/Maple\\_Sap\\_Business\\_Promotion\\_Program\\_Information\\_Resource\\_Sheet.pdf](https://www.uvm.edu/sites/default/files/Agriculture/agbusiness/factsheets/Maple_Sap_Business_Promotion_Program_Information_Resource_Sheet.pdf)

For Maple Benchmarking, Mark Cannella  
[Mark.Cannella@uvm.edu](mailto:Mark.Cannella@uvm.edu), (802) 476-2003

For Maple Sap Business Promotion, Chris Lindgren  
[Christopher.Lindgren@uvm.edu](mailto:Christopher.Lindgren@uvm.edu), (802) 733-3349 ext 247

Mark Isselhardt, UVM Extension Maple Specialist  
[Mark.Isselhardt@uvm.edu](mailto:Mark.Isselhardt@uvm.edu) (802) 899-9926

# Food Animals Concerns Trust (FACT) Fund-A-Farmer Grant

We (FACT) believe that all food-producing animals should be raised in a humane and healthy manner, and that everyone should have access to safe and humanely produced food. Since 1982, FACT has been leading the charge to make that vision a reality. We provide critical resources to help farmers adopt humane practices, advocate for food safety, and guide consumers in making healthy food choices. Our impact is powerful and growing. Since 2012, FACT has awarded more than \$590,000 in Fund-a-Farmer grants for projects that improve animal welfare.



Apply in Fall of 2022



Maximum award: \$3,000

## Eligibility

Applicant must be a United States-based farm or an independently owned or recognized Tribal-Entity

Proposed projects must impact at least one of these species:  
Beef cattle, bison, broiler chickens, dairy cows, ducks, geese, goats, laying hens, pigs, sheep and/or turkeys.

Farms must already raise animals.  
Only 1 application per year.

Does not include:

- Non-profit organizations
- Schools
- Farm Sanctuaries
- Aquaculture
- Apiaries
- Alpacas
- Horses
- Rabbits
- Raw milk
- Slaughter
- Certification Fees
- Purchase of livestock

## Practices

- Projects improving animal welfare
- Projects related to marketing, sales, or distribution of welfare-certified products
- Pasture expansion or transition
- Applicant does not need to hold or be seeking welfare certification
- Applicant may combine multiple projects together



Larissa McKenna, Humane Farming Program Director  
[grants@foodanimalsconcerns.org](mailto:grants@foodanimalsconcerns.org)  
<https://FoodAnimalsConcernsTrust.org>

# The University of Vermont (UVM) Extension Grazing & Livestock Program

UVM Extension Grazing & Livestock Programming teams are here to help new farmers who are seeking to get started on grass farming right, and experienced farmers looking to convert or improve their grass-based operations. Our staff work across three teams throughout Vermont to be the go-to resource for all your grazing needs. Contact Us - We are here to answers all questions you may have.

## New and Beginning Producers

- Resources for learning from other Farmers
- Business Planning
- Grazing Books & Guides

## Grazing Technical Assistance Resources

- Grazing Planing
- Improved Grazing
- Contract Grazing and Leasing Land
- Livestock Management
- Land Management
- Soil, Manure & Forage Testing
- Business Planning and Profitability
- Infrastructure
- Identifying Your Support System

## Farmer Funding and Grant Resources

- State
- Regional
- Federal

## Program and Contact Information

UVM Extension Grazing & Livestock Program  
<https://www.uvm.edu/extension/grazing>

Andrew May, Grazing & Livestock Coordinator  
(802) 476-2003  
[Andrew.May@uvm.edu](mailto:Andrew.May@uvm.edu)

## Pasture & Profitability Technical Assistance

### Center for Sustainable Agriculture

Juan Alvez - [jalvez@uvm.edu](mailto:jalvez@uvm.edu) 802-656-6116.  
Extension Research Associate, sustainable agriculture and environment, grazing management, agroecology, ecosystems services, conservation and green markets.

Kelsie Meehan - [Kelsie.meehan@uvm.edu](mailto:Kelsie.meehan@uvm.edu) (518) 810-6431.  
Dairy Herd Management Educator, statewide technical assistance for cow, goat, and sheep dairies. Small-to-mid sized producers, including pasture-based and organic dairies.

Amber Reed - [Amber.Reed@uvm.edu](mailto:Amber.Reed@uvm.edu)  
(802) 535-5562. Pasture Technical Assistance, Grazing technical assistance statewide on any type of livestock, managing a dairy grazing cohort, assisting with VAAFM's Pasture and Surface Water Fencing Program

### Northwest Crops and Soils Program

Heather Darby - [heather.darby@uvm.edu](mailto:heather.darby@uvm.edu) 802-524-6501.  
Agronomist and Soil Specialist, forage crop production and pasture management, soil management, and nutrient management.

Sara Ziegler - [Sara.Ziegler@uvm.edu](mailto:Sara.Ziegler@uvm.edu) 802-524-6501.  
Research Specialist, forage crop production and pasture management, nutrient management, grass-fed dairy systems.

### Champlain Valley Crop, Soil and Pasture Team

Cheryl Cesario - [Cheryl.Cesario@uvm.edu](mailto:Cheryl.Cesario@uvm.edu)  
(802) 388-4969 ext. 346. Grazing Outreach Specialist, UVM Extension, Middlebury Office. Grazing technical assistance, dairy, beef, small ruminants, Addison, Rutland, Bennington, Chittenden, and Franklin Counties

# Vermont Agency of Agriculture, Food & Markets (VAAFM)

## Pasture and Surface Water Fencing Program (PSWF)

The Pasture and Surface Water Fencing (PSWF) Program provides pasture management technical assistance and financial assistance to Vermont farmers to improve water quality and on-farm livestock exclusion from surface waters statewide.



Apply  
Year-Round



Technical & Financial  
Assistance

### Eligibility

- Pasture land poses a water quality concern.
- Water quality will benefit from implementation of improved pasture management and eligible and/or necessary conservation practices.
- Operator must have ownership or land control for the term of the agreement (10 years).

### Practices

- Fence
- Pipeline
- Water Source Development
- Water Tanks
- Improved Permanent Water Area
- Stream Crossings
- Electric Fence Chargers



Mary Montour,  
Agricultural Water Quality Program Coordinator  
(802) 461-6087  
mary.montour@vermont.gov  
<https://agriculture.vermont.gov/pswf>

# United States Department of Agriculture (USDA)

## Guide to Resources for Historically Underserved Farmers and Ranchers

This guide can help you get started with USDA, whether you are new to farming, ranching, or forestry management, or just new to working with us. From farm loans to crop insurance, and conservation programs to disaster assistance, USDA is here to support you and your operation. Some groups of people are identified in Farm Bill legislation and in USDA policy as being Historically Underserved (HU). Members of these communities have been historically underserved by, or subject to discrimination in, Federal policies and programs. Four groups are defined by USDA as “Historically Underserved,” including farmers or ranchers who are: Beginning; Socially Disadvantaged; Veterans; and Limited Resource.

### Contents Include

- Defining Historically Underserved
- Working with Farm Service Agency (FSA)
- Working with Natural Resources Conservation Service (NRCS)
- Working with Risk Management Agency (RMA)
- Urban Agriculture
- Organic Certification and Organic Transition
- Additional USDA and External Resources

### Website

Where to access the guide:

<https://www.nrcs.usda.gov/getting-assistance/underserved-farmers-ranchers>

### Contact

Your local FSA, NRCS, or RMA Office. See page the pages at the end of this guide for contact information.

# The University of Vermont (UVM) Extension

## Classes and Courses for Beginning and Aspiring Farmers

No matter what stage your farm business is in, UVM Extension offers educational opportunities to help you reach your full potential. Courses offered by the New Farmer Project and other UVM Extension programs are specifically designed to meet the needs of aspiring and beginning farmers. Check our Calendar for a regional list of events such as field days, workshops, classes and webinars which may be of interest but do not necessarily specifically target beginning farmers.

### Courses Offered

#### Growing Places

- For aspiring farmers and start-ups.
- Get your enterprise off to the right start. Participants define goals, explore and evaluate opportunities and resources, and become familiar with state and federal agriculture programs. Co-sponsored by the Women's Agricultural Network.

#### Building a Sustainable Business

- UVM Extension ag business educators provide coaching and consultations related to farm business development.

#### Farm Financial Management and Education

- The Building a Sustainable Business course guides participants through developing a farm business plan.

#### Taking Stock

- Designed for farmers with at least five years of commercial production experience and who are considering changes to the scale, scope and/or design of their farm business.

### Website

[www.uvm.edu/extension/agriculture/new-farmer/wagn-classes](http://www.uvm.edu/extension/agriculture/new-farmer/wagn-classes)

### Contact

Vermont New Farmer Project  
c/o UVM Extension  
327 US Route 301, Barre, VT 05602  
802-476-2003

[newfarmer@uvm.edu](mailto:newfarmer@uvm.edu)

(866) 860-1382 (toll free in Vermont)  
or 802-476-2003

# The University of Vermont (UVM) Extension

## Farmworker Resources

Migrant workers and their families often live in geographic, linguistic and cultural isolation, which can create barriers to education, wellness and other public services. UVM Extension provides assistance with a focus on improving access to healthcare and education, food access and security, and overall social wellbeing.

### Programs

#### **Vermont Migrant Education Program**

- Provides free educational support services to eligible children and youth who relocate independently or with their families in order to obtain seasonal or temporary employment in agriculture.

#### **Bridges to Health**

- Bridges to Health is a health outreach program for migrant farmworkers in Vermont. Utilizing a care coordination model carried out by regional Migrant Health Promoters, the program empowers farmworkers to make timely health decisions. In addition to offering care coordination to migrant farmworkers in need of health care services, Bridges to Health creates capacity-building opportunities for local health entities to implement linguistically and culturally appropriate services.

#### **Farming Across Cultures**

- For producers, managers, and Latino employees in the areas of work, health and the home.

#### **The Huertas Project**

- Huertas is a community-based food security project that enables Latino/a migrant farmworkers and families living on Vermont's dairies to access culturally familiar and local foods through cultivating kitchen gardens.

#### **Spanish Online Dairy Worker Training**

- This self-paced Spanish dairy worker training certificate program is designed to develop the workforce skills needed on a modern dairy farm. This program was created as a partnership through Cornell Pro-Dairy and UVM Extension's Farmworker Programming. Each module focuses on common dairy worker areas of responsibility. All materials are presented and written in Spanish. There is no charge for this certification.

#### **Vermont Migrant Health Immunization Program**

- Migrant farmworkers can easily receive the Covid-19 vaccine, the Tdap (tetanus, diphtheria and pertussis) vaccine, and the seasonal Influenza (flu) vaccine at their place of work through this program

### Website

<https://www.uvm.edu/extension/agriculture/farmworker>

# The University of Vermont (UVM) Extension New Farmer Project

The New Farmer Project brings together information and resources from Extension and the broader Vermont Agriculture community to assist new farmers in creating successful agricultural businesses. There are many resources available to farmers in Vermont, but finding the right information at the right time can be a challenge for new farmers. By collaborating with UVM Extension specialists and partners in the non-profit and government organizations serving farmers, we put our efforts into gathering the information most applicable to new farmers and bringing it to this site. Our goal is to help streamline your access to services and information relevant to your farming situation.

## Contents Include

- Education
  - Growing Places
- Technical Assistance
  - UVM's new Farm Management Team (FMT)
- Resources
  - New Farmer Project Blog
  - Toolshed: Business Management
    - Business Planning
    - Employment and Labor
    - Financial Management
  - Toolshed: Land Access
  - Toolshed: Marketing
  - Toolshed: Production
- Media
  - Recordings of strategy and information sharing sessions

## Website

[www.uvm.edu/extension/newfarmerproject](http://www.uvm.edu/extension/newfarmerproject)

## Contact

Vermont New Farmer Project  
c/o UVM Extension  
327 US Route 301, Barre, VT 05602  
802-476-2003

[newfarmer@uvm.edu](mailto:newfarmer@uvm.edu)

(866) 860-1382 (toll free in Vermont)  
or 802-476-2003



# University of Vermont (UVM) Extension Women's Agricultural Network (WAgN)

We have been providing education and technical assistance geared to the needs of women farmers since 1995. We work with established, beginning, and aspiring farmers.

## Information

Through a series of educational, technical assistance, and networking opportunities, WAgN works to increase the number of women owning and operating profitable farms and ag-related businesses, as well as their profile in leadership positions throughout the agricultural sectors of business, government, and community.

From developing and assessing a business idea through the advanced planning and implementation phases, WAgN offers a program to support and encourage these varying levels.

### OUR VISION

To increase the number of women owning/ operating profitable farms and ag-related businesses and their profile in leadership positions throughout the agricultural sectors of business, government and community.

### OUR MISSION

To provide education and technical assistance to individuals starting or enhancing farms and ag-related businesses.

## Link

You can learn more about this program at the UVM Extension Website:

[www.uvm.edu/extension/agriculture/womens-agricultural-network](http://www.uvm.edu/extension/agriculture/womens-agricultural-network)

## Contact

Mary Peabody, Director of WAgN,  
UVM Extension Specialist in  
Community Resources and Economic  
Development  
[mary.peabody@uvm.edu](mailto:mary.peabody@uvm.edu)  
(802) 476-2003

Beth Holtzman, Outreach Education  
Coordinator of WAgN  
[beth.holtzman@uvm.edu](mailto:beth.holtzman@uvm.edu)  
802-476-2003

Office Location  
The Women's Ag Network  
327 US Route 302, Berlin, VT 05641

# Farm Service Agency (FSA) Conservation Reserve Program (CRP) General Enrollment

In exchange for a yearly rental payment, farmers enrolled in the program agree to remove environmentally sensitive land from agricultural production and plant species that will improve environmental health and quality. Contracts for land enrolled in CRP are from 10 to 15 years in length. The long-term goal of the program is to re-establish valuable land cover to help improve water quality, prevent soil erosion, and reduce loss of wildlife habitat. Signed into law by President Ronald Reagan in 1985, CRP is one of the largest private-lands conservation programs in the United States. Thanks to voluntary participation by farmers and landowners, CRP has improved water quality, reduced soil erosion, and increased habitat for endangered and threatened species.

## General Enrollment



Apply by March 11th

Rental payments for conservation cover, with cost-share up to 50% for cover establishment. There is a climate-smart incentive payment of 3%, 5%, or 10% for CRP practices increasing carbon sequestration and reducing greenhouse gas emissions.

- Producer must have owned or operated the land for at least 12 months prior to March 11th, 2022, unless land was acquired upon the death of the original land owner, ownership change occurred due to foreclosure, or circumstance presents adequate assurance to FSA that the new owner did not acquire the land for the purpose of enrollment into CRP.
- Land must be in cropland in agricultural commodity for at least 4 years between 2012 and 2017 and be capable of being planted. Perennial grasses and legumes in a rotation not to exceed 12 years are also eligible.
- Land must have a weighted erosion index of 8 or higher, be expiring, or be located in a priority area.

Find your local FSA Service Center:

<https://offices.sc.gov.usda.gov/locator/app?state=vt&agency=fsa>

View the Program Website:

<https://www.fsa.usda.gov/programs-and-services/conservation-programs/conservation-reserve-program/>

FSA State Office  
356 Mountain View Drive  
Suite 104  
Colchester, VT 05446  
Phone: (802) 658-2803  
Fax: (855) 794-3676

# Farm Service Agency (FSA) Conservation Reserve Program (CRP) Continuous Enrollment

In exchange for a yearly rental payment, farmers enrolled in the program agree to remove environmentally sensitive land from agricultural production and plant species that will improve environmental health and quality. Contracts for land enrolled in CRP are from 10 to 15 years in length. The long-term goal of the program is to re-establish valuable land cover to help improve water quality, prevent soil erosion, and reduce loss of wildlife habitat. Signed into law by President Ronald Reagan in 1985, CRP is one of the largest private-lands conservation programs in the United States. Thanks to voluntary participation by farmers and landowners, CRP has improved water quality, reduced soil erosion, and increased habitat for endangered and threatened species.

## Continuous Enrollment



Apply Year-Round

Signup Incentive Payment of 32.5 percent of the first full year annual rental payment is paid at contract approval on all newly enrolled Continuous CRP contract acreage. A Practice Incentive Payment of up to 50 percent is paid for installing the practice.

Annual rental payments at a rate of 90 percent of the existing rate to eligible CRP continuous participants based on per acre cropland and marginal pasture land rental rates, plus a 10 percent “inflationary” adjustment, determined by FSA. The per-acre annual rental rate may not exceed the calculated rate or \$300/acre. Producers may elect to receive a rental rate amount less than the maximum payment rate.

Climate-Smart Practice Incentive: FSA provides an incentive of 3, 5, or 10 percent for CRP practices that will increase carbon sequestration, reduce GHG emissions, and otherwise are climate smart practices. The incentive amount is based on the estimated benefits of each practice.

Water Quality Incentive: FSA provides a 20 percent rental rate incentive for CRP water quality practices that will improve water quality by reducing sediment loading, nutrient loading and harmful algae blooms.

Cost-Share Assistance: Cost-share of up to 50 percent of the re-imbursable cost of installing the practice is provided by FSA. Cost-share assistance is not available for any management activity.

Find your local FSA Service Center:

<https://offices.sc.gov.usda.gov/locator/app?state=vt&agency=fsa>

View the Program Website:

<https://www.fsa.usda.gov/programs-and-services/conservation-programs/conservation-reserve-program/>

FSA State Office  
356 Mountain View Drive  
Suite 104  
Colchester, VT 05446  
Phone: (802) 658-2803  
Fax: (855) 794-3676

# Land for Good

## A Landowner's Guide to Leasing Land for Farming & Farm Access Methods

Our mission is to ensure the future of farming in New England by putting more farmers more securely on more land. Since 2004 we have provided caring support and expert guidance to help farmers, landowners and communities navigate the complex challenges of land access, tenure and transfer. Our comprehensive and collaborative approach achieves solutions to help realize family, farm business and community goals.

### Farm Access Methods

The purpose of this guide is to provide an organized framework of farm access methods to help farmers make informed decisions.

This guide is organized into categories based on ownership.

- Ownership Now
  - Sole Ownership
  - Whole Shared Ownership Interests
  - Partial Ownership Interests
- Ownership in the Future
  - Lease to Own
  - Land Contract
  - LLC or Corporation
  - Gift Over Time
- No Ownership
  - Leasehold Interest in Land
  - Other Arrangements for Land

Link to Farm Access Methods Guide:  
[landforgood.org/wp-content/uploads/LFG-Farm-Access-Methods-Guide.pdf](https://landforgood.org/wp-content/uploads/LFG-Farm-Access-Methods-Guide.pdf)

### A Landowners Guide

A Landowner's Guide to Leasing Land for Farming

This handbook is intended to assist landowners in making land available for farming by others. If you have property that could be used for agriculture, this guide will help you through the steps.

Link to Access Guide:

[landforgood.org/get-resource/?fid=https://landforgood.org/wp-content/uploads/LFG-Landowners-Guide-To-Leasing-To-A-Farmer-Handbook.pdf](https://landforgood.org/get-resource/?fid=https://landforgood.org/wp-content/uploads/LFG-Landowners-Guide-To-Leasing-To-A-Farmer-Handbook.pdf)

### Contact

Phone: 603-357-1600  
Email: [info@LandForGood.org](mailto:info@LandForGood.org)  
PO Box 625  
Keene, New Hampshire 03431

# Natural Resources Conservation Service (NRCS) Agricultural Conservation Easement Program Agricultural Lands Easement

The Agricultural Conservation Easement Program (ACEP) helps landowners, land trusts, and other entities protect, restore, and enhance wetlands, grasslands, working farms, and ranches through conservation easements. Under the Agricultural Land Easements component, NRCS helps American Indian tribes, state and local governments, and non-governmental organizations protect working agricultural lands and limit non-agricultural uses of the land. The Vermont Housing and Conservation Board (VHCB) and Vermont Agency of Agriculture, Food & Markets (VAAFM) also work with land trusts purchase land or development rights.



Sign-up deadline changes annually; refer to the website



Up to 50% of appraised conservation easement value for permanent easement

Land eligible for agricultural easements includes private or Tribal land that is agricultural land, cropland, rangeland, grassland, pastureland and nonindustrial private forest land. NRCS will prioritize applications that protect agricultural uses and related conservation values of the land and those that maximize the protection of contiguous acres devoted to agricultural use, including land on a farm or ranch.

Eligible Land Types and which also meets one of the four following land eligibility criteria:

1. Parcels enrolled to protect Prime, Unique, or Other productive soil.
2. Parcels enrolled to provide protection of grazing uses and related conservation values.
3. Parcels containing historical or archeological resources.
4. Land that furthers a state or local policy consistent with the purposes of ACEP-ALE.

If you are interested in applying, contact a Land Trust, as these easements are entity-held.

View the NRCS Agricultural Land Easement Website

<https://www.nrcs.usda.gov/wps/portal/nrcs/detail/?cid=nrcseprd416633>

View the Vermont Agency of Agriculture, Food & Markets Farmland Conservation Website

<https://agriculture.vermont.gov/land-use-renewable-energy-0/farmland-conservation>

View the Vermont Housing & Conservation Board Farmland Conservation Website

<https://vhcb.org/our-programs/conservation/farmland-conservation>

View the Vermont Land Trust Website

<https://vlt.org>

Duxbury  
Land Trust  
PO Box 56  
Waterbury, VT 05676  
(802) 244-7512

Greensboro  
Land Trust  
PO Box 135  
Greensboro, VT 05841  
(802) 533-7723

Learn more from  
the American  
Farmland Trust  
<https://farmland.org>

Vermont  
Land Trust  
8 Bailey Ave  
Montpelier, VT 05601  
(802) 745-6301

# Natural Resources Conservation Service (NRCS) Agricultural Conservation Easement Program Wetland Reserve Easement

The Agricultural Conservation Easement Program (ACEP) helps landowners, land trusts, and other entities protect, restore, and enhance wetlands, grasslands, and working farms and ranches through conservation easements. Under the Agricultural Land Easements component, NRCS helps American Indian tribes, state and local governments and non-governmental organizations protect working agricultural lands and limit non-agricultural uses of the land. Under the Wetlands Reserve Easements component, NRCS helps to restore, protect and enhance enrolled wetlands. The Vermont Housing and Conservation Board (VHCB) and Vermont Agency of Agriculture, Food & Markets (VAAF) also work with land trusts purchase land or development rights.



Sign-up deadline changes annually; refer to the website

Permanent Easements – Permanent easements are conservation easements in perpetuity. NRCS pays between 90% and 100% of the appraised easement value for the purchase of the easement. Additionally, NRCS pays between 75 to 100 percent of the restoration costs.

Obe Racicot  
NRCS Assistant State  
Conservationist - Programs and  
RCPP Coordinator  
Obediah.Racicot@usda.gov

Jim Eikenberry  
NRCS Wetlands Specialist  
James.Eikenberry@usda.gov

Vermont  
Land Trust  
8 Bailey Ave  
Montpelier, VT 05601  
802.745.6301

Duxbury  
Land Trust  
PO Box 56  
Waterbury, VT 05676  
802.244.7512

View the NRCS Wetland Reserve Easement Website  
[https://www.nrcs.usda.gov/wps/portal/nrcs/detail/vt/programs/easements/acep/?cid=nrcs142p2\\_010534](https://www.nrcs.usda.gov/wps/portal/nrcs/detail/vt/programs/easements/acep/?cid=nrcs142p2_010534)

View the Vermont Agency of Agriculture, Food & Markets  
Farmland Conservation Website  
<https://agriculture.vermont.gov/land-use-renewable-energy-0/farmland-conservation>

View the Vermont Housing & Conservation Board Farmland  
Conservation Website  
<https://vhcb.org/our-programs/conservation/farmland-conservation>

View the Vermont Land Trust Website  
<https://vlt.org>

Greensboro  
Land Trust  
PO Box 135  
Greensboro, VT 05841  
802.533.7723

# Northeast Farmers of Color Land Trust (NEFOC)

## Advancing Equitable Land Access

We act for a future of food and land sovereignty in the Northeast region, through permanent and secure land tenure for Indigenous, Black, Latinx, and Asian farmers who will relate with the land in a sacred manner that honors our ancestors' dreams – for regenerative farming, sustainable human habitat, ceremony, native ecosystem restoration, climate healing, and cultural preservation.

Our overarching goal is to reshape root causes and systems that marginalize our communities, co-creating a critical mass of self-determined communities generating scalable knowledge together, while synthesizing, sharing, and embodying expressions of land-based solidarity as means of mutual healing and survivance. The core of NEFOC is our Network, an informal alliance of 525 Black, Latinx, Indigenous, and Asian farmers and land stewards of color making our lives on land in New England and Upstate New York. Together we collectively envision, enact, and share ways to be in reciprocity with land, in the process healing generational trauma and redefining the meaning of “farmer” and our care for the land and each other.

### Programs

What makes NEFOC Land Trust Unique?

Community Land Trust + Conservation Land Trust = Health, Wealth, and Joy

#### Programs

- Relationships & Reciprocity Program
- Community Conservation Program
- Land Network Program: Network Membership & Farmer Services
- Policy, Partnerships, & Climate Justice Program

### Contact

Contact information is available on the NEFOC website:

[nefoclandtrust.org](http://nefoclandtrust.org)

# The University of Vermont (UVM) Extension

## Succession Planning

The UVM Extension Agricultural Business Team is offering free assistance to any Vermont farm business looking for support with succession planning. This service is designed to help farmers identify the urgency of their needs, find appropriate resources and information based on those needs, and provide feedback on developing a plan to address them. You can fill out a short intake form to get started and a member of the team will connect with you. All services provided through this intake form are free and are for any type of farm business in Vermont.

### Resources

- Legal Issues
- Tax Planning
- Conservation
- Financial Analysis and Preparation (Including Retirement Readiness)
- Estate Planning
- Business Planning for Succession
- Lease/Rental Information
- Business Agreements with New Ownership
- Full Transfer/Succession Plan

### Website

<https://share.hsforms.com/1qXjNWwsBR1aYp8gvfUJXUA3sjg1>

### Contact

UVM Extension Farm Viability works with farmers all over Vermont. Our team brings decades of experience in farm business planning. See Our Team page for more information.

For general inquiries, contact Corinne Cooper, the Administrative Assistant for the Berlin office and she will direct you: (802) 476-2003.



# Vermont Housing & Conservation Board (VHCB) Farmland Conservation Program

Includes  
Maple  
Producers

Established in 1987, the Vermont Housing & Conservation Board remains the forerunner in the nation in pioneering a comprehensive approach to affordable housing and community development linked with land conservation and historic preservation. The Board's enabling statute is: The Vermont Housing and Conservation Trust Fund Act, 10 V.S.A. Chapter 15, §§302-325a. Programs include Housing, Conservation, Vermont Farm & Forest Viability, Healthy & Lead-Safe Homes, VHCB AmeriCorps, Rural Economic Development Initiative, Leadership, Farmland Access, Water Quality, Energy Efficiency and Food Access and Affordable Housing. The farmland conservation program ensures some of Vermont's most productive farmland will remain undeveloped and available for farming in the future. The program ensures that farms are not isolated by residential development.

## Overview

The Board evaluates farmland applications in a two-step process: Pre-applications are submitted by an eligible entity (typically a land trust), and reviewed by a committee comprised of staff from VHCB, the Natural Resources Conservation Service, the Vermont Agency of Agriculture, the Vermont Department of Environmental Conservation, and land trust partners.

If the project meets VHCB's eligibility criteria, it is approved for VHCB cost-share of an appraisal to determine the value of the conservation easement. Applications for funding are developed for those projects that have been approved as pre-applications, and submitted for consideration at one of the Board's regularly scheduled meetings. Board evaluation is based upon soil quality, location, farm infrastructure, management, and other resources brought to the project.

There is a funding cap of \$550,000 per application, and \$4,200 per acre.

### Vermont Housing & Conservation Board

58 East Street  
Montpelier, VT 05602  
(802) 828-3250  
info@vhcb.org  
<https://vhcb.org>

# Vermont Agency of Agriculture, Food & Markets (VAAFM) Conservation Reserve Enhancement Program (CREP)

Vermont's Conservation Reserve Enhancement Program (CREP) is a voluntary program designed to reduce sediment runoff and improve water quality by removing land from agricultural production and establishing vegetative buffers. State and federal funds are used to compensate landowners for the loss of productive agricultural land through upfront incentive payments and annual rental payments based on the total acreage dedicated to vegetated filter strips, forested buffers, or grassed waterways.



## Apply Year-Round



Incentive Payments \$415- \$2005 per acre (between state + federal) + Implementation cost-share up to 100% + Annual payments \$80 - \$200 per acre per year for 15 years



## Eligibility:

- Applicants must have owned or operated the land for at least 12 months prior to enrollment (may be waived by County Committee)
- Land must be in agricultural use
- Land adjacent to a perennial stream or river that lacks shade, vegetative buffers and/or has water quality impacts.
- Wetland restoration on cropland
- Buffers around ponds or lakes
- Minimum buffer width of 35 ft

Can I harvest this land?

No

How long is the agreement?

15 Years

How long of a buffer is 1 acre?

1,245 linear ft  
35 ft buffer width

## Why CREP?



Perennial vegetation provides shade which reduces water temperature and increases oxygen, promoting aquatic life



Provides wildlife and pollinator habitat



Promotes water infiltration, reduces soil loss and fertilizer/amendment runoff



Increases stability of stream banks, improving flood resilience



Ben Gabos, CREP Coordinator, VAAFM  
(802) 461-3814  
ben.gabos@vermont.gov

Apply Online

[Agriculture.Vermont.gov/crep](https://Agriculture.Vermont.gov/crep)

# Vermont Land Trust

## Farmland Conservation

Working towards the common good of land and people isn't always easy. Collaboration is essential to success, as is being deeply rooted in the communities we serve. With expertise in conservation, ecology, community engagement, and finance, we help:

- Conserve land with important economic, community, and environmental benefits by limiting development and ensuring sound land stewardship practices
  - Support farmers in buying land and growing sustainable businesses
  - Improve the health of land, water, and soil, and share that knowledge with all others
- Ensure that permanent legal protections on 2,200 parcels are upheld, in partnership with landowners
  - Connect all people to the outdoors through education and events

### How We Help

#### Farmers & Farmland

- Protect Your Farm through land conservation for permanent protections
- Transfer or Sell Your Farmland through conservation, finding a buyer, or joining our network
- Buy Farmland with guidance, relationships, or a lease with VLT
- Improve the Health of Water and Soil with help with restoration, easements, or program enrollment
- Get Help with Your Conserved Land from our staff
- Access Grants and Resources like the Eric Rozendaal Memorial Award, Land Stewards Award, and partner programs

#### Woodland Owners & Forests

- Protect Your Woodland through woodland donations to VLT or another partner
- Care for the Woods by attending talks by foresters, webinars, or volunteers
- Get Help with Your Conserved Land from our staff

#### Communities & Individuals

- Protect Land Important to Your Community through legal help, fundraising planning and support, ecological restoration, or conservation
- Learn from the Land with events, educational webinars, and our online guides
- Land for All by making efforts to create land access for all communities and peoples by creating trails that are accessible, clarifying indigenous rights, assisting people experiencing hunger, and expanding land ownership for people who have been historically marginalized and oppressed.

### Contact

Vermont Land Trust  
8 Bailey Avenue  
Montpelier, VT 05602

Phone: (802) 223-5234  
Email: [info@vlt.org](mailto:info@vlt.org)  
Website: [vlt.org](http://vlt.org)

# Farm Service Agency (FSA) Emergency Conservation Program (ECP)

Includes  
Maple  
Producers

The Emergency Conservation Program (ECP) helps farmers and ranchers to repair damage to farmlands caused by natural disasters and to help put in place methods for water conservation during severe drought. The ECP does this by giving ranchers and farmers funding and assistance to repair the damaged farmland or to install methods for water conservation.

## Eligibility

FSA county committees determine land eligibility based on on-site inspections of damaged land and the type and extent of damage. Eligible land includes land used for:

- Commercial farming, ranching and orchard operations
- Growing nursery stock and Christmas tree plantations
- Grazing for commercial livestock production
- Conservation structures such as, waterways, terraces, diversions and windbreaks

\*Conservation problems existing before the applicable disaster event are ineligible for ECP assistance\*

## Payment

- Up to 75% of the cost to implement approved restoration practices;
- Up to 90% of the cost to implement approved restoration practices for producers who certify as limited resource, socially-disadvantaged or beginning farmers/ranchers
- Limited to \$500,000 per person or legal entity per disaster
- Available as an advance payment of up to 25% of expected cost-share, for only the replacement or restoration of fencing

## Practices

- Removing debris from farmland (cleanup of wind- or water- deposited debris, such as woody material, sand, rock and trash on cropland or pastureland)
- Grading, shaping or leveling land (filling gullies, re-leveling irrigated farmland, and incorporating sand and silt)
- Restoring fences (livestock cross fences, boundary fences, cattle gates, or wildlife exclusion fence on agricultural land)
- Restoring conservation structures (waterways, terraces, diversion ditches and permanently installed ditching system)
- Providing emergency water during periods of severe drought

The Emergency Conservation Program (ECP) is administered by FSA state and county committees and county offices. Producers should contact their local FSA county office regarding ECP enrollment periods and eligibility.  
FSA state office (802) 658-2803

# Farm Service Agency (FSA) Noninsured Crop Disaster Coverage Assistance Program

The Noninsured Crop Disaster Assistance Program (NAP) administered by the U.S. Department of Agriculture (USDA) Farm Service Agency (FSA), provides financial assistance to producers of non-insurable crops to protect against natural disasters that result in lower yields or crop losses, or prevents crop planting.

## Eligibility

Includes  
Maple  
Producers

An eligible producer is a landowner, tenant, or sharecropper who shares in the risk of producing an eligible crop and is entitled to an ownership share of that crop. An individual's or entity's average adjusted gross income (AGI) cannot exceed \$900,000 to be eligible for NAP payments. Also, NAP payments received, directly or indirectly, will be attributed to the applicable individual or entity and limited to \$125,000 per crop year, per individual or entity for crops with basic (catastrophic) coverage. Any NAP payments received directly or indirectly for crops with additional (buy-up) coverage, will be attributed to the applicable individual or entity and limited to \$300,000 per crop year, per individual or entity. To learn more, visit [fsa.usda.gov/limits](https://fsa.usda.gov/limits).

Eligible crops must be commercially produced agricultural commodities for which crop insurance is not available and be any of the following:

- Crops grown for food
- Crops planted and grown for livestock consumption, such as grain and forage crops, including native forage; Crops grown for fiber, such as cotton and flax (except trees)
- Crops grown in a controlled environment, such as mushrooms and floriculture
- Specialty crops, such as honey and maple sap
- Sea oats and sea grass
- Sweet sorghum and biomass sorghum
- Industrial crops, including crops used in manufacturing or grown as a feedstock for renewable biofuel, renewable electricity or biobased products
- Value loss crops, such as aquaculture, Christmas trees, ginseng, ornamental nursery and turf-grass sod; and
- Seed crops where the propagation stock is produced for sale as seed stock for other eligible NAP crop production

### Find your local FSA Service Center

<https://offices.sc.egov.usda.gov/locator/app?state=vt&agency=fsa>

View the Program Website:

<https://www.fsa.usda.gov/programs-and-services/disaster-assistance-program/noninsured-crop-disaster-assistance/index>

### FSA State Office

356 Mountain View Drive  
Suite 104  
Colchester, VT 05446  
Phone: (802) 658-2803  
Fax: (855) 794-3676

# Northeast Organic Farming Association of Vermont Vermont Farmer Emergency Fund

Includes  
Maple  
Producers

The NOFA Vermont Farmer Emergency Fund is available to assist Vermont certified organic and NOFA Vermont member commercial farmers who are in financial need after having been adversely affected by natural and unnatural disasters such as income loss due to crop failure, field flooding, fire, barn collapse, etc. Farmers may request up to \$2,500 in grants that do not need to be repaid.

## Eligibility

The fund is available to certified Vermont Organic Farmers (VOF) who have been certified for at least one year or current NOFA Vermont commercial farmers who have been NOFA Vermont members for at least one year.

The fund may be used to help replace infrastructure, for example greenhouses barns, fencing, seed equipment, feed equipment, livestock equipment, and other losses caused by the disaster.

The fund may be used to help pay outstanding farm related bills and immediate needs such as loan and mortgage repayments.

The fund is not an alternative to insurance and does not cover losses that are covered by a successful insurance claim or losses covered by other sources.

The fund may not be used to cover projected income from crops lost from the disaster.



NOFA VT  
(802) 434-4122  
info@NOFAVT.org  
<https://nofavt.org>

# Vermont Agency of Agriculture, Food & Markets (VAAFM) Organic Certification Cost-Share Program

The Vermont Agency of Agriculture, Food and Markets (VAAFM) offers funding assistance through the U.S. Department of Agriculture (USDA) Agricultural Marketing Service (AMS) to organic producers and handlers of agricultural products who have received organic certification through a USDA-accredited certifying agent. Certified organic operations may receive reimbursement of up to 50% of their direct certification costs paid between October 1 and September 30 annually, not to exceed \$500 per certification scope. There are up to four eligible certification scopes (crops, livestock, wild crops, and handling, which must be individually inspected for organic certification to be eligible for reimbursement. Please note that available funds for this program are reduced from previous years. Reimbursement is available on a first come, first served basis.



Apply in fall, first-come first-served



Reimbursement up to 50% of certification costs, capped at \$500



Apply Online

[Agriculture.Vermont.gov/Grants](http://Agriculture.Vermont.gov/Grants)

### Eligibility

- Certified organic producers and Handlers who have paid certification fees to become newly certified or recertified for specific scopes under the NOP
- Crops
- Livestock
- Wild crops
- Handling

### Costs

- Application fees
- Inspection fees including travel costs and per diem for organic inspectors
- USDA organic certification costs
- User fees/sale assessments
- Postage
- OCCSP state organic program fees

Learn more about organic certification:  
[Northeast Organic Farming Association-Vermont \(NOFA-VT\)](http://NortheastOrganicFarmingAssociation-Vermont(NOFA-VT).org)  
 PO Box 697, Richmond, VT 05477  
<https://nofavt.org>  
 (802) 434-4122

Terry Smith, Executive Assistant, VAAFM  
[Terry.Smith@vermont.gov](mailto:Terry.Smith@vermont.gov)  
 (802) 828-5667

# Organic Crop Improvement Association (OCIA) Microgrant for Research & Education

OCIA Research and Education, Inc. was incorporated in 2002 and is a 501(c)(3) organization. OCIA R&E is led by a six-member board of directors and one OCIA staff member. OCIA Research and Education was formed by OCIA International members to fund organic farming research conducted around the world. Research results are presented to members during annual meetings and through quarterly newsletters. The mission of OCIA Research and Education is to support farmer driven research, on farm and at research institutions, including exploratory and demonstration projects. We facilitate connections between farmers, researchers, consumers and decision-makers, and educate organic producers and local and global communities regarding organic farming and foods.



2 deadlines per year:  
March 15th & November  
15th



Minimum \$500  
Maximum \$3,000

75% released upon acceptance of a proposal  
and 25% released when final report submitted



Apply by email:  
info@ocia.org

## Eligibility

### Eligible Practices:

- Educational resources related to organic agriculture for school-aged children.
- Research pertaining to organic agriculture

### Examples include:

- Variety trials
- Grafting
- Weed control
- Transitioning to organic

Does not include: Equipment, infrastructure, labor costs, or community gardens



Organic Crop Improvement Association

International

info@ocia.org

(402) 477-2323

https://ocia.org



# Organic Farming Research Foundation (OFRF) Grants Program

Since its founding in 1990, OFRF has awarded 337 grants to organic researchers and farmers, investing over \$3M. All OFRF-funded research must involve farmers or ranchers in project design and implementation, take place on certified organic land, and include strong education and outreach components. All research results are freely available in our online database.



Check the Website for upcoming requests for applications



Up to \$20,000



Check the Website for updates on how to apply

## Eligibility

- Applicants should articulate how the proposed research project will foster the improvement or adoption of organic farming systems, as well as ways in which organic farmers or ranchers can use the project results in their operations.
- All research proposals **MUST** address the resiliency of organic systems to challenges like climate change and/or have economic and social considerations to complement on-farm research.
- Research projects **MUST** include strong education and outreach components and contain measurable outcomes. Projects should include expected impacts due to the results or outcomes of the projects.



Organic Farming Research Foundation

<https://ofrf.org>

(831) 426-6606

[grants@ofrf.org](mailto:grants@ofrf.org)

# Northeast Organic Farming Association of Vermont Vermont Family Farmer of the Month

Includes  
Maple  
Producers

The Vermont Family Farmer of the Month Fund makes a financial award to a Vermont family farmer each month. Awards recognize farmers whose businesses are contributing to a resilient Vermont agricultural landscape, and demonstrate environmental stewardship through sustainable practices. Funding for the Vermont Family Farmer of the Month comes from a generous, anonymous, charitable gift fund. It is administered by the Northeast Organic Farming Association of Vermont in partnership with VHCB Vermont Farm & Forest Viability Program, Shelburne Farms, and the Vermont Grass Farmers Association.

## Eligibility



\$10,000 - \$12,000

Innovative projects that will improve the viability of the enterprise. An example of an eligible project could be an upgrade or construction of a farm stand or wash and pack station, improvements in on-farm energy efficiency or integration of renewable energy, infrastructure design or construction for a new farm product, or an investment in soil or animal health. In order to apply, you must meet the following conditions:

- You/your farm are a NOFA Vermont Member or a certified Vermont Organic Farm
- You have not received this award in the past
- You are a resident of Vermont

### Award Timeline

Twelve grants will be awarded annually - one award for each month. Applications are reviewed three times a year and announced each month.

November through February Awards  
Applications due by: September 28th

March through June Awards  
Applications due by: January 26th

July through October Awards  
Applications due by: May 28th



NOFA Vermont  
PO Box 697, Richmond, VT  
05477 Phone: (802) 434-4122  
Fax: 802-329-3033  
Email: [info@nofavt.org](mailto:info@nofavt.org)  
<https://nofavt.org/>

# The Fruit Guys Small Farm Microgrant

Each year, The Fruit Guys award grants ranging from \$2,000-\$5,000 for projects that align with one or more of the core ideals detailed in their Sustainable Farming Manifesto, which can be read on their website, [FruitGuysCommunityFund.org](http://FruitGuysCommunityFund.org)

## Assistance



Deadline: January  
2023



Award:  
\$2,000 -  
\$5,000

### Will Not Fund:

- Non soil-based farming operations (i.e. hydroponic/aquaponic growing systems)
- Land purchases
- Costs associated with labor (your budget should only include materials and supplies)
- Projects that require a percentage of the award be used for consultants or administration
- Requests that are dependent upon receiving funding from a separate, larger grant

## Eligibility

Applicant is an owner/operator of the farm or has long-term, legal access to the land. If farming on leased land, a letter of support from the landowner specifying length of the lease agreement must be provided with the grant application.

The applicant farm must be an established working farm that is looking to improve operations.

Applicant has not been previously awarded a FruitGuys Community Fund grant. We are not currently funding past grantees.

We welcome farms to re-apply for the same project or a different one if you have not been funded.

Farm is small to medium-sized as determined by acreage in agricultural production. Farms with more than 300 acres in agricultural production are ineligible to apply.

Farmers will engage in community outreach, education, or policy advocacy surrounding sustainable agriculture. Engagement must be described in the grant proposal. Up to 10% of the total grant amount awarded may be used to support efforts for community outreach, education, and/or advocacy.



[FruitGuysCommunityFund.org](http://FruitGuysCommunityFund.org)  
[info@fruitguyscommunityfund.org](mailto:info@fruitguyscommunityfund.org)

# Vermont Land Trust (VLT) Eric Rozendaal Memorial Award

The Eric Rozendaal Memorial Award is given annually to a farmer who honors the legacy of Eric Rozendaal — a thoughtful, creative, and entrepreneurial farmer. The award fund was created through contributions from Eric’s family and friends and is managed by the Vermont Land Trust. The first Eric Rozendaal Memorial Award was given in 2019 to Corie Pierce of Bread & Butter Farm. Thanks to a generous donor, there were two awardees in 2020: Amanda Andrews of Tamarack Hollow Farm and Tom Gilbert of Black Dirt Farm. The 2021 award went to Christine Bourque of Blue Heron Farm in Grand Isle.

## Assistance



June 30th



\$5,000



### Eligibility

The awardee must:

- Be a resident of Vermont
- Be actively managing or working on a commercial farm operation in Vermont
- Have not received the award in the past.

The applicant does not have to own a farm. Current VLT staff, VLT board members, members of the Selection Committee and the immediate family members of VLT staff, VLT board members and members of the Selection Committee are not eligible to apply.

## Criteria

**Land stewardship:** A demonstrated commitment to building healthy soils and protecting natural resources

**Giving back:** A commitment to giving back to the community and to fellow farmers. This could be through mentorship, community engagement, or other activities.

**Entrepreneurism:** A demonstrated entrepreneurial approach to farming. This could include introducing new farm products or developing new markets.

**Use of the funds:** A clear description of recent or planned project(s) on the farm related to the award criteria that the funds can support.



Vermont Land Trust



[vlt.org/eric](http://vlt.org/eric)



[info@vlt.org](mailto:info@vlt.org)

(802) 223-5234

# Vermont Farm Women's Fund (VFWF)

## Scholarships and Stipends

Includes  
Maple  
Producers

The Vermont Farm Women's Fund provides stipends and scholarships to help women farmers build thriving businesses and to participate in agricultural policy development. Since 2009, the fund has made 71 awards totaling over \$36,000.

### Overview

Scholarships can be used to defray registration fees for educational conferences, courses and classes. The key to a successful proposal will be explaining how the education relates to improvements you are considering on your farm.

VFWF targets its scholarship awards to women who own, operate and/or work on Vermont farms, and who earn a majority of their income from farm-related activities.

VFWF will contribute up to 75 percent of class/course/conference registration fees. Except in cases of extreme financial hardship, the maximum scholarship amount will be \$150. VFWF reserves the right, at its discretion, to award less than the full amount an applicant requests or no amount.

In selecting scholarship recipients, we are seeking individuals who:

Have specific plans to use the skills, information and knowledge they gain at the conference to implement successful farming practices on their own farm in the next 6-12 months, and/or who intend to share what they learned with other farmers in the 6-12 months; Agree to submit a written report about the education they received within six weeks of the event, and to respond to follow-up surveys from the VFWF. Award decisions will also consider the applicant's financial situation.

To be eligible for funding, applications must be submitted to the Vermont Farm Women's Fund least 10 days before the event that you want to attend. VFWF reviews and awards scholarship requests on a first-come, first-served basis as funds are available. Applicants are notified within 10 days of receipt of the application. If your proposal is not selected, you can resubmit it for a future round of funding. Rather than simply resubmit the original proposal however you might consider ways to revise and strengthen your proposal.

If you receive an award from the VFWF you will need to wait 2 years before applying again. This is to ensure that the funds are spread out and help as many individuals as possible.



Vermont Farm Women's Fund  
(802) 476-2003  
vfwf@uvm.edu  
<https://blog.uvm.edu/vfwf/>

## Environmental Mediation Center (EMC) Vermont Agricultural Mediation Program (VTAMP)

The Environmental Mediation Center is a nonprofit organization that provides free mediation services to the agricultural community. The EMC utilizes a roster of highly trained mediators experienced in agricultural mediation. The EMC works on a variety of agricultural disputes.

### Example Mediation Services

- Adverse Decision Letters
- Compliance Issues with Farm Programs
- Restructuring Farm loans
- Foreclosures
- Debts to Unsecured Creditors, such as Feed and Equipment Dealers
- Wetlands Determinations
- Pesticide Issues

### Process

- After a party requests mediation, the mediation program will contact all parties to get details and provide education on the mediation process.
- Mediation is a process where the parties meet with an impartial person to assist them with negotiation of their differences. Mediation is voluntary. Mediation is confidential and mediators cannot impose a resolution.

### Contact Information

Matt Strassberg, Director of the Environmental Mediation Center  
(802) 583-1100 ext 101  
matts@emcenter.org

<https://emcenter.org/>

# Vermont County Foresters

The list of County Foresters is maintained on Department of Forests, Parks and Recreation Website:  
<https://fpr.vermont.gov/forest/list-vermont-county-foresters>

## Addison County Forester

Chris Olson 23 Pond Lane, Suite 300 Middlebury, VT  
05753 Work Phone: 802-388-4969 x333  
[chris.olson@vermont.gov](mailto:chris.olson@vermont.gov)

## Bennington County Forester

Cory Creagan 271 North Main Street, Suite 215  
Rutland, VT 05701-2423 Work Phone: 802-505-0068  
[cory.creagan@vermont.gov](mailto:cory.creagan@vermont.gov)

## Caledonia/Essex County Forester

Matthew Langlais 374 Emerson Falls Road, Suite 4  
St. Johnsbury, VT 05819 Work Phone: 802-751-0111  
[matt.langlais@vermont.gov](mailto:matt.langlais@vermont.gov)

## Chittenden County Forester

Ethan Tapper 111 West Street Essex Junction, VT  
05452-4695 Work Phone: 802-585-  
9099 [ethan.tapper@vermont.gov](mailto:ethan.tapper@vermont.gov)

## Franklin/Grand Isle County Forester

Nancy Patch 278 South Main Street, Suite 2 St  
Albans, VT 05478 Work Phone: 802-917-2711  
[nancy.patch@vermont.gov](mailto:nancy.patch@vermont.gov)

## Lamoille County Forester

Emily Potter 29 Sunset Drive, Suite 1 Morrisville, VT  
05661-8331 Work Phone: 802-622-  
4230 [emily.potter@vermont.gov](mailto:emily.potter@vermont.gov)

## Orange County Forester

Dave Paganelli 118 Prospect Street, Suite 102 White  
River Junction, VT 05001 Work Phone:  
802-461-5304 [david.paganelli@vermont.gov](mailto:david.paganelli@vermont.gov)

## Orange/Windsor County Forester

A.J. Follensbee 118 Prospect Street, Suite 102  
White River Junction, VT 05001 Primary Phone: 802-  
595-2429 Alternate Phone: 802-281-5262  
[allen.follensbee@vermont.gov](mailto:allen.follensbee@vermont.gov)

## Orleans County Forester

Jared Nunery 1162 North Craftsbury Road (Mail:  
P.O. Box 62) Craftsbury Common, VT 05827 Work  
Phone: 802-595-5754 [jared.nunery@vermont.gov](mailto:jared.nunery@vermont.gov)

## Rutland County Forester

Kyle Mason 271 North Main Street, Suite 215  
Rutland, VT 05701-2423 Work Phone:  
802-595-9736 [kyle.mason@vermont.gov](mailto:kyle.mason@vermont.gov)

## Southern Windsor County Forester

Hannah Dallas 118 Prospect Street, Suite 102 White  
River Junction, VT 05001 Work phone:  
802-622-4169 [hannah.dallas@vermont.gov](mailto:hannah.dallas@vermont.gov)

## Washington County Forester

Robert Nelson 5 Perry Street, Suite 20 Barre, VT  
05641-4265 Work Phone: 802-636-7203  
[Robert.Nelson@vermont.gov](mailto:Robert.Nelson@vermont.gov)

## Windham County Forester

Sam Schneski 130 Austine Drive, Suite 300  
Brattleboro, VT 05301 Work Phone: 802-380-8916  
[sam.schneski@vermont.gov](mailto:sam.schneski@vermont.gov)

## Farm Service Agency (FSA) Field Offices

Addison County Farm Service Agency,  
68 Catamount Park, Middlebury VT  
05753  
(802) 388-6748

Windham County Farm Service Agency  
(Serves Bennington) 28 Vernon St.,  
Brattleboro, VT 05301  
(802) 254-9755

Caledonia County Farm Service Agency  
(Serves Chittenden and Essex Counties)  
481 Summer St., St Johnsbury, VT  
05819, (802) 748-2641

Windsor County Farm Service Agency  
(Serves Orange) 28 Farmvu Dr., White River  
Jctn., VT 05001  
(802) 295-7942

Chittenden County Farm Service Agency  
(Serves Washington) , 94 Harvest Ln.,  
Williston, VT 05495  
(802) 288-8155

Farm Service Agency State Office  
356 Mountain View Dr.,  
Colchester, VT 05446 (802) 658-2803

Franklin County Farm Service Agency  
(Serves Grand Isle), 50 S. Main St., St.  
Albans, VT 05478  
(802) 527-1296 ext 110

Lamoille County Farm Service Agency  
109 Professional Dr. Ste 2, Morrisville,  
VT 05661  
(802) 888-4935

Orleans County Farm Service Agency  
59 Waterfront Plaza Ste 11, Newport, VT  
05855  
(802) 334-6090

Rutland County Farm Service Agency  
(Serves Bennington) 170 S. Main St. Ste  
4, Rutland, VT 05701  
(802) 775-8034



# Natural Resources Conservation Service (NRCS) Field Offices

## **Natural Resources Conservation**

### **Service (NRCS) State Office**

356 Mountain View Drive, Suite 105  
Colchester, Vermont 05446  
802-951-6796/Fax: 855-794-3677

### **Northwest Zone:**

St. Albans NRCS Field Office, 50 South Main St,  
Ste B-20 St. Albans, VT 05478  
802-527-1296

Morrisville NRCS Field Office, 109 Professional Dr.,  
Ste. 2 Morrisville, VT 05661  
802-888-4935

### **Northeast Zone:**

Newport NRCS Field Office, 59 Waterfront Plaza,  
Ste. 12 Newport, VT 05855  
802-334-6090

St. Johnsbury NRCS Field Office, 481 Summer St.,  
Ste. 202 St. Johnsbury, VT 05819  
T802-748-2641

White River Junction NRCS Field Office, 28 Farmvu  
Dr. White River Jct., VT 05001  
802-295-7942

### **Central Zone:**

Middlebury NRCS Field Office, 68  
Catamount Park, Ste. B Middlebury, VT  
05753  
802-388-6748

Williston NRCS Field Office, 94 Harvest  
Lane, Suite 203 Williston, VT 05495-  
8997  
802-288-8155

Berlin Field Office, 617 Comstock Rd.,  
Ste. 1 Berlin, VT 05602  
802-828-4493

### **South Zone:**

Rutland NRCS Field Office, 170 S. Main  
St., Ste. 4 Rutland, VT 05701  
802-775-8034

White River Junction NRCS Field Office,  
28 Farmvu Dr. White River Jct., VT  
05001  
802-295-7942

Brattleboro NRCS Field Office, 28  
Vernon St., Ste. 332 Brattleboro, VT  
05301  
802-689-3037

# Natural Resources Conservation Districts (NRCD) Offices

## Bennington County NRCD

170 South Main St, Suite 4 Rutland, VT  
Michael Fernandez, District Manager  
(802) 775-8034 x 132 or Michael@bccdvt.org

## Caledonia County NRCD

481 Summer St., Suite 202, St. Johnsbury, VT  
Emily Finnegan, District Manager  
(802) 424-3149 or emily.finnegan@vt.nacdnet.net

## Essex County NRCD

5396 VT-105, Brunswick, VT  
Sam Mayne, District Manager  
802-424-5353 or essexnrccd@gmail.com

## Franklin County NRCD

50 South Main Street, Saint Albans, VT  
Lauren Weston, District Manager  
802-528-4176 or info@FranklinCountyNRCD.org

## Grand Isle County NRCD

P.O. Box 212, North Hero, VT  
Molly Varner, District Manager  
802-372-8400 or molly.gicnrccd@gmail.com

## Lamoille County NRCD

109 Professional Drive, Suite 2, Morrisville, VT  
Peter Danforth, District Manager  
802-521-2004 or lccddirector@gmail.com

## Orleans County NRCD

59 Waterfront Plaza Newport, VT  
Sarah Damsell, District Manager  
802-334-6090 x 7008 or  
sarah.damsell@vt.nacdnet.net

## Ottawaquechee NRCD

28 Farmvu Drive, White River Junction, VT  
Sue Greenall, District Manager  
802-369-3166 or ONRCD1@gmail.com

## Otter Creek NRCD

68 Catamount Park, Suite B, Middlebury, VT  
Pamela Stefanek, District Manager  
802-771-3037 or pam.stefanek@vt.nacdnet.net

## Poultney Mettowee NRCD

PO Box 209, Poultney VT 05764  
Hilary Solomon, District Manager  
802-287-6880 or hilary@pnmnrccd.org

## Rutland NRCD

170 S Main Street Ste 4, Rutland, VT  
Nanci McGuire, District Manager  
802-775-8034 x 117 or  
nanci.mcguire@vt.nacdnet.net

## White River NRCD

28 Farmvu Dr, White River Junction, VT  
Jennifer Byrne, District Manager  
802-369-3167 or WhiteRiverNRCD@gmail.com

## Windham County NRCD

28 Vernon Street, Suite 332 Brattleboro, VT  
Cory Ross, District Manager  
802-689-3024 or windhamcountynrccd@gmail.com

## Winooski NRCD

94 Harvest Lane, Suite 203, Williston, VT  
617 Comstock Rd, Suite 1, Berlin, VT  
Remy Crettol, District Manager  
802-288-8155 x 104 or info@winooskinrccd.org